

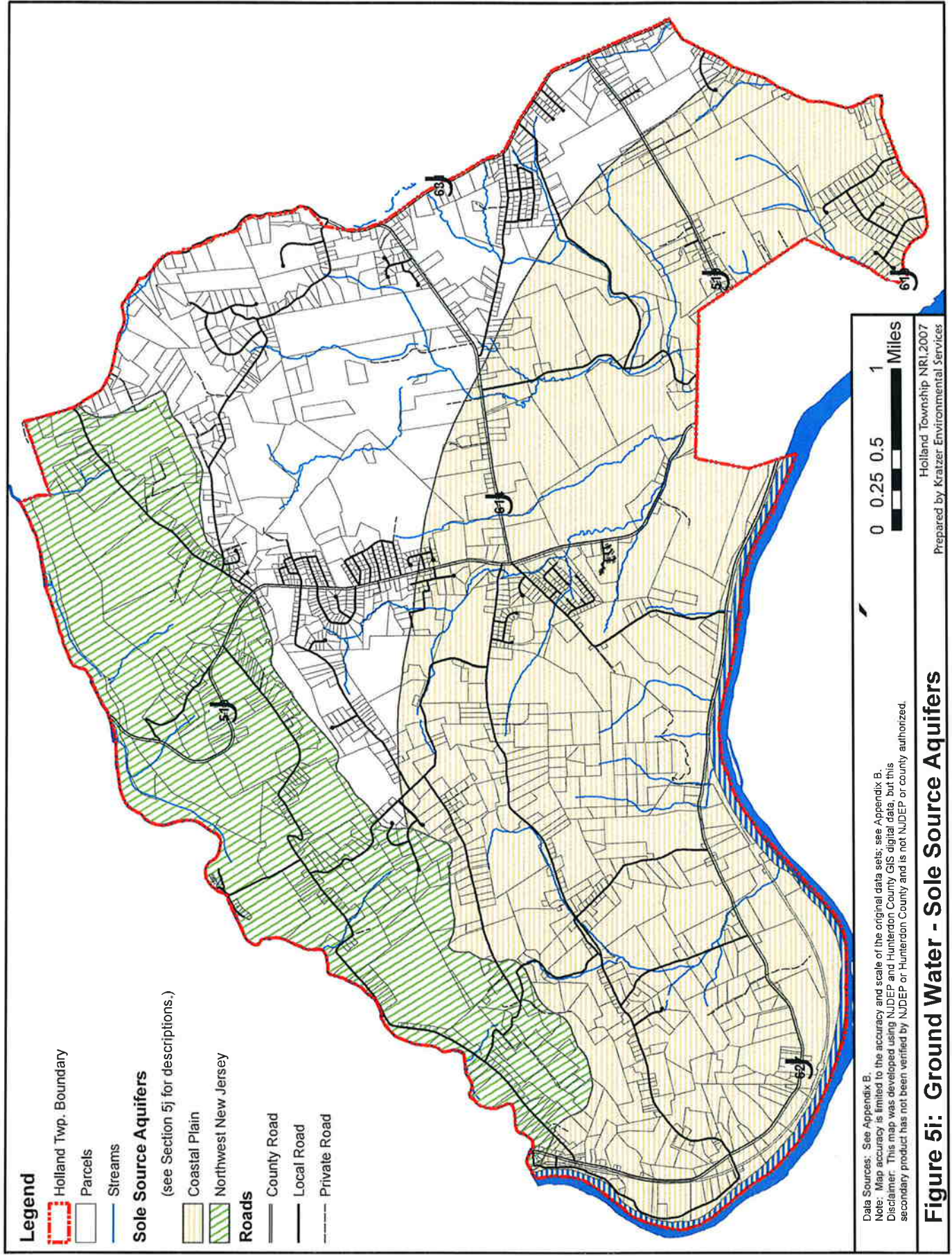
**Legend**

- Holland Twp. Boundary
- Public Community Water Supplies
- Water Purveyor Areas
- Holland-Proposed Revisions Sewer Service Area
- Holland Sewer Service Areas
- Wellhead Protection Areas**
  - Tier 1
  - Tier 2
  - Tier 3
- Streams and Rivers
- Parcels
- Roads**
  - County Road
  - Local Road
  - Private Road









Data Sources: See Appendix B.  
 Note: Map accuracy is limited to the accuracy and scale of the original data sets; see Appendix B.  
 Disclaimer: This map was developed using NJDEP and Hunterdon County GIS digital data, but this secondary product has not been verified by NJDEP or Hunterdon County and is not NJDEP or county authorized.



**Figure 5h: Public Water & Sewer Areas**



**Legend**

-  Holland Twp. Boundary
-  Parcels
-  Streams
- Sole Source Aquifers**  
(see Section 5j for descriptions.)
-  Coastal Plain
-  Northwest New Jersey
- Roads**
-  County Road
-  Local Road
-  Private Road

Data Sources: See Appendix B.  
 Note: Map accuracy is limited to the accuracy and scale of the original data sets; see Appendix B.  
 Disclaimer: This map was developed using NJDEP and Hunterdon County GIS digital data, but this secondary product has not been verified by NJDEP or Hunterdon County and is not NJDEP or county authorized.



**Figure 5i: Ground Water - Sole Source Aquifers**

## References: Ground Water

- Canace, Robert, Hydrogeologist, New Jersey Geological Survey. January 21, 2004. Personal Communication.
- Canace, Robert. 1995. New Jersey Geological Survey, Department of Environmental Protection, Division of Science and Research. Critique of the Franklin Township ground water resources.
- Charles, Emmanuel G., Cyrus Behroozi, Jack Schooley, and Jeffrey L. Hoffman. 1993. A Method for Evaluating Ground-Water-Recharge Areas in New Jersey. NJ Geological Survey Report GSR-32. NJDEP Geological Survey. 95 pages.
- DeMicco and Associates, Inc. February 2004. Groundwater Resource Evaluation of Holland Township, Hunterdon County, New Jersey. Prepared for Holland Township Planning Board. 89 pages.
- Elam, Roy J. and Peter D. Popoff. October 1972. Comprehensive Areawide Water Plan. Board of Chosen Freeholders, Hunterdon County, New Jersey. Elam and Popoff Engineering Associates.
- Freeze, R. Allan and John A. Cherry. 1979. Groundwater. Prentice-Hall, Inc: Englewood Cliffs, New Jersey. 604 pages.
- Heath, Ralph C. 1983. Basic Ground-Water Hydrology. U.S. Geological Survey Water-Supply Paper 2220. U.S. Geological Survey in cooperation with the North Carolina Department of Natural Resources and Community Development. 84 pages.
- Houghton, H. F. 1990. Hydrogeology of the Early Mesozoic Rocks of the Newark Basin, New Jersey in Kroll, R.L. and Brown, J.O., compilers, Aspects of groundwater in New Jersey, Field guide and proceedings of the seventh annual meeting of the Geological Association of New Jersey: Union, New Jersey, Geological Association of New Jersey, p. E1-E36.
- Kasabach, Haig. 1966. Geology and ground water resources of Hunterdon County, N.J. Bureau of Geology and Topography, Division of Resource Development, Special Report No. 24, 128 pages.
- Lewis-Brown, Jean C. and Eric Jacobsen. 1995. Hydrogeology and Ground-water flow, Fractured Mesozoic Structural-Basin Rocks, Stony Brook, Beden Brook, and Jacobs Creek Drainage Basins, West-Central New Jersey. US Geological Survey Water-Resources Investigations Report 94-4147. West Trenton, New Jersey, 83 pages.
- Miller, G. Tyler. 1988. Living in the Environment: An Introduction to Environmental Science. Wadsworth Publishing Company: Belmont, California, 603 pages.
- National Oceanic and Atmospheric Administration. June, July, August, and September, 1995. Hourly Precipitation Data, New Jersey.
- N.J.A.C. 7:14B-1 et seq. [http://www.nj.gov/dep/srp/regs/ust/ust\\_01.pdf](http://www.nj.gov/dep/srp/regs/ust/ust_01.pdf)
- NJDEP Bureau of Water Quality Standards and Assessment website. February 2004. <http://www.state.nj.us/dep/wmm/sgwqt/sgwqt.html>
- NJDEP Division of Publicly Funded Site Remediation, Site Remediation Program (SRP). 2002. Known Contaminated Site List for New Jersey, 2001. GIS data. <http://www.state.nj.us/dep/gis/digidownload/zips/statewide/kcsl2001.zip>
- NJDEP Division of Science, Research and Technology (DSRT) and Water Supply Administration/Bureau of Safe Drinking Water. February, 2004. New Jersey Private Well Testing Act Program September 2002 – March 2003. 65 pages. [http://www.nj.gov/dep/pwta/pwta\\_report.pdf](http://www.nj.gov/dep/pwta/pwta_report.pdf)
- NJDEP Site Remediation and Waste Management Program. 2006. Known Contaminated Sites in NJ Report 7th Edition (Spring 2006). <http://www.nj.gov/dep/srp/kcs-nj/hunterdon/#1015>
- New Jersey Geological Survey Hydro Database, 2002: <http://www.state.nj.us/dep/njgs/geodata/dgs02-1.zip>
-

New Jersey Water Supply Authority. June 2002. Ground Water in the Raritan River Basin: A Technical Report for the Raritan Basin Watershed Management Project. 40 pages.

Sanders, Paul F. May 2003. Ambient Levels of Metals in New Jersey Soils. NJDEP Environmental Assessment and Risk Analysis Element. 6 pages.

Steering Committee of the New Jersey Comparative Risk Project. March 2003. Final Report of the New Jersey Comparative Risk Project. 213 pages.

U.S. Environmental Protection Agency Region 2. June 1988. Fifteen Basin Aquifer Systems. Support Document. <http://www.epa.gov/Region2/water/aquifer/basin/15basin.htm>

U.S. Environmental Protection Agency Region 2. New Jersey Coastal Plain Aquifer. Support Document. May 1988. <http://www.epa.gov/Region2/water/aquifer/coast/coastpln.htm>

U.S. Geological Survey. Water Resources Data, New Jersey, Water Year 1993. Volume 2. Delaware River Basin and tributaries to Delaware Bay. U.S. Geological Survey Water-Data Report NJ-93-2.

U.S. Geological Survey. 2005a, Major aquifers in New Jersey. <http://nj.usgs.gov/gw/aquifer.html>

U.S. Geological Survey. 2005b, Aquifer and Well Characteristics in NJ. [http://nj.usgs.gov/gw/table\\_1.html](http://nj.usgs.gov/gw/table_1.html)

U.S. Geological Survey. 2006a. NJ Climate Response Network (main page with overview map). <http://groundwaterwatch.usgs.gov/StateMaps/NJ.html>

U.S. Geological Survey. 2006b. NJ Climate Response Network. Site Number: 403719075091801 - 410387--MW82 <http://groundwaterwatch.usgs.gov/CRNSites.asp?S=403719075091801>

Vecchioli, John, and Palmer, M.M. 1962. Ground Water Resources of Mercer County, N.J. New Jersey Department of Conservation and Economic Development, Special Report 19. 71 pages.

## Internet Resources: Ground Water

### General Ground Water Information

Ground Water Primer (US EPA): <http://www.epa.gov/seahome/gwprimer.html>

Hunterdon County Well and Septic System Care in Hunterdon County:  
<http://www.co.hunterdon.nj.us/health/wellguide.htm>

Comparative Risk Project (NJDEP Div. of Science, Research and Technology): <http://www.state.nj.us/dep/dsr/njcrp/>

NJDEP Division of Science, Research and Technology, Private Well Testing Act report  
[http://www.nj.gov/dep/pwta/pwta\\_report.pdf](http://www.nj.gov/dep/pwta/pwta_report.pdf)

### NJDEP Standards and Rule Proposals:

Bureau of Water Quality Standards and Assessment: <http://www.state.nj.us/dep/wmm/sgwqt/sgwqt.html>

Notices of rule proposals and adoptions: <http://www.nj.gov/dep/rules/>

### Hydrogeology

Aquifer and Well Characteristics in New Jersey (USGS): [http://wwwnj.er.usgs.gov/gw/table\\_1.html](http://wwwnj.er.usgs.gov/gw/table_1.html)

NJDEP, 2005. Basis and Background of the Septic Density Standard of the Highlands Water Protection and Planning Act Rule at N.J.A.C 7:38-34: <http://www.state.nj.us/dep/highlands/docs/seticdensity.pdf>

U.S. Geological Survey. NJ Climate Response Network Wells:  
<http://groundwaterwatch.usgs.gov/StateMaps/NJ.html>

NJ Geological Survey Home Page: <http://www.state.nj.us/dep/njgs/index.html>

NJ Geological Survey Hydrogeologic Data (horizontal hydraulic conductivity values, transmissivity values, and vertical hydraulic conductivity values): <http://www.state.nj.us/dep/njgs/geodata/dgs02-1.zip>

USGS - New Jersey District - Ground Water Information (USGS): <http://www.nj.cr.usgs.gov/gw/>

USGS - Water Resources of NJ: <http://nj.usgs.gov/>

**Known Contaminated Sites (NJDEP)**

NJDEP Dataminer: <http://www.nj.gov/dep/opra/online.html>

NJDEP Site Remediation Program. Publicly Funded Cleanups Site Status Report 203.  
[http://liberty.state.nj.us/dep/srp/publications/site\\_status/2003/](http://liberty.state.nj.us/dep/srp/publications/site_status/2003/)

GIS data: <http://www.state.nj.us/dep/gis/digidownload/zips/statewide/kcsl2001.zip>

Site Remediation Programs (SRP): <http://www.state.nj.us/dep/srp>

**Sole Source Aquifers:**

US EPA Region 2 <http://www.epa.gov/Region2/water/aquifer/index.html>