

According to the ONLM, if these sites become degraded or destroyed, we may lose some of the unique components of our natural heritage.

Within Holland Township, there are three Natural Heritage Priority Sites (see **Figure 7g**). **Table 7.8** provides descriptions of the sites. One is ranked³ **B3** (high significance⁴) and two are ranked **B4** (moderate significance⁵).

These Natural Heritage Priority Sites are considered some of the best and most viable occurrences of endangered and threatened species and natural communities, but they do not cover all known habitats for endangered and threatened species in Holland Township. Information on whether or not endangered or threatened species have been documented on a specific piece of land can be obtained by requesting a search of the Natural Heritage Database from the Office of Natural Lands Management. In addition, some areas have never been surveyed, but may also contain endangered or threatened species.

Table 7.8: Natural Heritage Priority Sites Descriptions

Site Name: Javes Road Site	Site Code: S.USNJHP1 * 295
Location: Holland Township, Hunterdon County	
Description: Wet meadow along small stream.	
Boundary Justification: Includes wetlands habitat for state listed endangered plant.	
Biodiversity Rank: Biodiversity Significance B4 (moderate significance)	
Comments: An excellent occurrence of a state listed endangered plant.	
Site Name: Milford Bluffs	Site Code: S.USNJHP1 * 368
Location: Holland Township, Hunterdon County	
Description: Steep shale cliffs along the edge of the Delaware River with deciduous woodlands and low level residential housing.	
Boundary Justification: Primary boundary follows edge of shale cliff community. Secondary boundary includes large plateau on tip of bluffs to protect hydrologic integrity of site.	
Biodiversity Rank: Biodiversity Significance B3 (high significance)	
Comments: This is the best natural red shale cliff community in NJ. Many state rare and endangered plant species can be found on the dry cliff face and adjacent rich ravines.	
Site Name: Vines Ravine	Site Code: S.USNJHP1 * 565
Location: Holland Twp, Bethlehem Twp, Bloomsbury Boro & Pohatcong Twp.; Hunterdon & Warren Counties	
Description: A hemlock and mixed deciduous woodland on the steep slope of a ravine.	
Boundary Justification: Bounds drawn to include the extent of known habitat for rare plant species.	
Biodiversity Rank: Biodiversity Significance B4 (moderate significance)	
Comments: The site contains a State-listed endangered plant species.	
Source: NJDEP ONLM, October 18, 2005	

The ONLM has also developed the Natural Heritage Grid Map (see **Figure 7g**), which provides a general representation of the locations of rare plant species and natural communities as of February 2004, including both historically and recently documented habitat. The purpose of the Grid Map is to document rare plant species and natural community habitats to inform decision-makers who need to address the conservation of natural resources. The species or

³Biodiversity Significance Ranks are as follows: **B1** – Outstanding significance; **B2** – Very high significance; **B3** – High significance; **B4** – Moderate significance; **B5** – Of general biodiversity interest or open space.

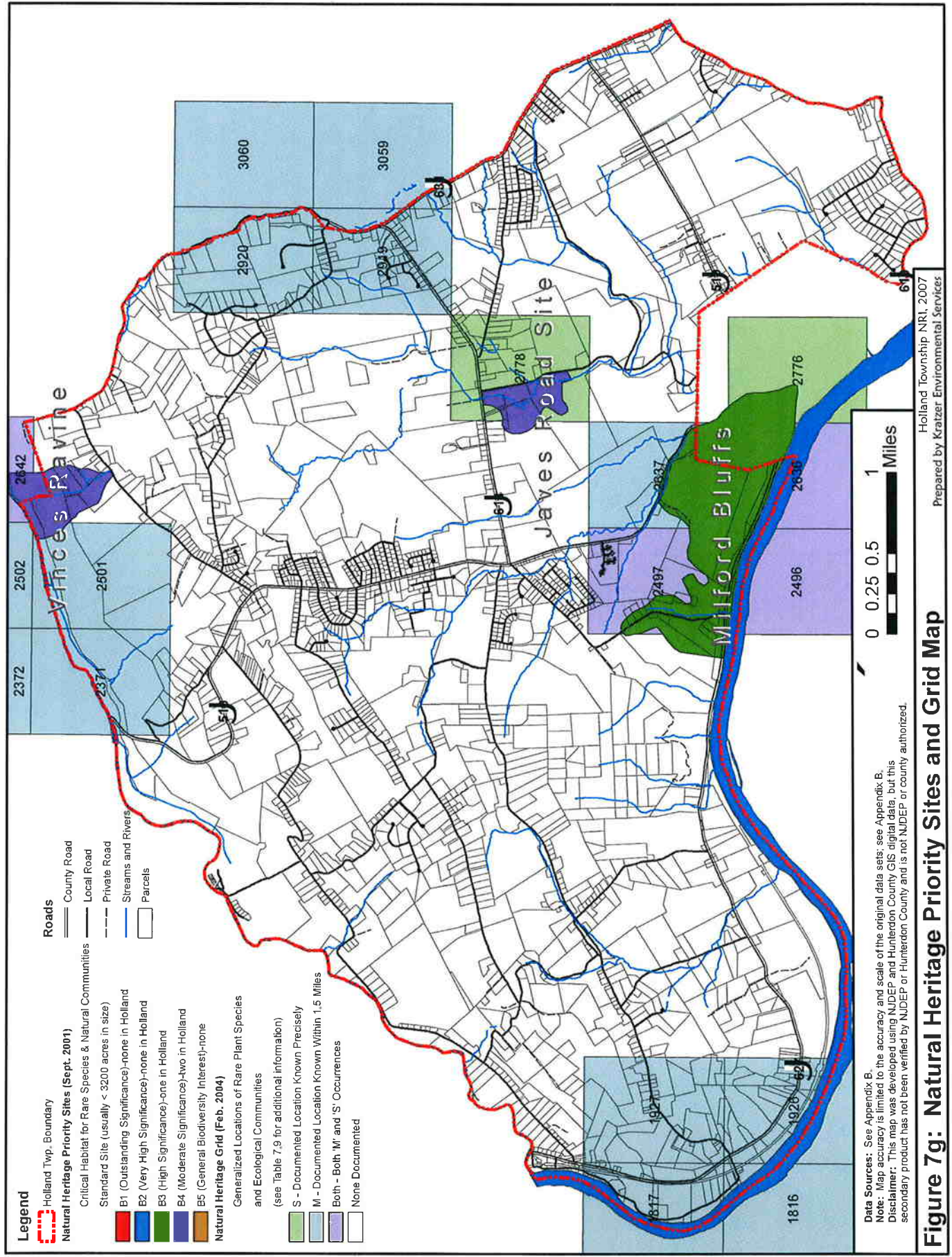
⁴“High significance, such as any other viable occurrence of an element that is globally imperiled, a good occurrence of a globally rare element, an excellent occurrence of any natural community, or a concentration (4+) of good or excellent occurrences of elements that are critically imperiled in the State.” (NJDEP ONLM, November 2002)

⁵“Moderate significance, such as a viable occurrence of a globally rare element, a good occurrence of any natural community, a good or excellent occurrence or only viable state occurrence of an element that is critically imperiled in the State, an excellent occurrence of an element that is imperiled in the State, or a concentration (4+) of good occurrences of elements that are imperiled in the State or excellent occurrences of elements that are rare in the State.” (NJDEP ONLM, November 2002)

Table 7.9: Natural Heritage – Species Found in Each Grid (grids are shown in Figure 7g)

Area	Grid Id. #	Precision *	Class	Species Name	Species Common Name	SRANK **	Habitat
unnamed area – Western	1816	M	Vascular plant	ERAGROSTIS FRANKII	FRANK'S LOVE GRASS	S2	PALUSTRINE
	1817	M	Vascular plant	ERAGROSTIS FRANKII	FRANK'S LOVE GRASS	S2	PALUSTRINE
	1926	M	Vascular plant	ERAGROSTIS FRANKII	FRANK'S LOVE GRASS	S2	PALUSTRINE
	1927	M	Vascular plant	ERAGROSTIS FRANKII	FRANK'S LOVE GRASS	S2	PALUSTRINE
Vinces Ravine Area	2371	M	Vascular plant	DOELLINGERIA INFIRMA	CORNEL-LEAF ASTER	S2	TERRESTRIAL
	2372	M	Vascular plant	DOELLINGERIA INFIRMA	CORNEL-LEAF ASTER	S2	TERRESTRIAL
	2501	M	Vascular plant	DOELLINGERIA INFIRMA	CORNEL-LEAF ASTER	S2	TERRESTRIAL
	2502	M	Vascular plant	DOELLINGERIA INFIRMA	CORNEL-LEAF ASTER	S2	TERRESTRIAL
		M	Vascular plant	CALYSTEZIA SPITHAMAEA	ERECT BINDWEED	S1	TERRESTRIAL
	2642	Both	Vascular plant	CALYSTEZIA SPITHAMAEA	ERECT BINDWEED	S1	TERRESTRIAL
2642	Both	Vascular plant	VIOLA CANADENSIS	CANADIAN VIOLET	S1	TERRESTRIAL	
Javes Road Area	2778	S	Vascular plant	CAREX BUSHII	BUSH'S SEDGE	S1	PALUSTRINE; TERRESTRIAL
	2778	S	Vascular plant	CAREX PALLESCENS	PALE SEDGE	S2	PALUSTRINE; TERRESTRIAL
unnamed area - Eastern	2919	M	Vascular plant	AGASTACHE NEPETOIDES	YELLOW GIANT-HYSSOP	S2	TERRESTRIAL
	2920	M	Vascular plant	AGASTACHE NEPETOIDES	YELLOW GIANT-HYSSOP	S2	TERRESTRIAL
	3059	M	Vascular plant	AGASTACHE NEPETOIDES	YELLOW GIANT-HYSSOP	S2	TERRESTRIAL
	3060	M	Vascular plant	AGASTACHE NEPETOIDES	YELLOW GIANT-HYSSOP	S2	TERRESTRIAL
Milford Bluffs area	2496	Both	Ecological Community	SHALE CLIFF/ROCK OUTCROP COMMUNITY		S2?	NO DATA AVAILABLE
		Both	Vascular plant	KUHNIA EUPATORIOIDES	FALSE BONESET	S1	TERRESTRIAL
		Both	Vascular plant	PYCNANTHEMUM CLINOPODIOIDES	BASIL MOUNTAIN-MINT	S1	TERRESTRIAL
		Both	Vascular plant	AGRIMONIA MICROCARPA	SMALL-FRUIT GROOVBURR	S2	TERRESTRIAL
		Both	Vascular plant	HYBANTHUS CONCOLOR	GREEN VIOLET	S1	TERRESTRIAL
		Both	Vascular plant	CHEILANTHES LANOSA	HAIRY LIPFERN	S2	TERRESTRIAL
	2497	Both	Ecological Community	SHALE CLIFF/ROCK OUTCROP COMMUNITY		S2?	NO DATA AVAILABLE
		Both	Vascular plant	KUHNIA EUPATORIOIDES	FALSE BONESET	S1	TERRESTRIAL
		Both	Vascular plant	PYCNANTHEMUM CLINOPODIOIDES	BASIL MOUNTAIN-MINT	S1	TERRESTRIAL
		Both	Vascular plant	HYBANTHUS CONCOLOR	GREEN VIOLET	S1	TERRESTRIAL
		Both	Vascular plant	CHEILANTHES LANOSA	HAIRY LIPFERN	S2	TERRESTRIAL
	2636	Both	Ecological Community	SHALE CLIFF/ROCK OUTCROP COMMUNITY		S2?	NO DATA AVAILABLE
		Both	Vascular plant	KUHNIA EUPATORIOIDES	FALSE BONESET	S1	TERRESTRIAL
		Both	Vascular plant	PYCNANTHEMUM CLINOPODIOIDES	BASIL MOUNTAIN-MINT	S1	TERRESTRIAL
		Both	Vascular plant	AGRIMONIA MICROCARPA	SMALL-FRUIT GROOVBURR	S2	TERRESTRIAL
		Both	Vascular plant	HYBANTHUS CONCOLOR	GREEN VIOLET	S1	TERRESTRIAL
		Both	Vascular plant	CHEILANTHES LANOSA	HAIRY LIPFERN	S2	TERRESTRIAL
	2637	M	Vascular plant	KUHNIA EUPATORIOIDES	FALSE BONESET	S1	TERRESTRIAL
		M	Vascular plant	PYCNANTHEMUM CLINOPODIOIDES	BASIL MOUNTAIN-MINT	S1	TERRESTRIAL
	2776	S	Ecological Community	SHALE CLIFF/ROCK OUTCROP COMMUNITY		S2?	NO DATA AVAILABLE

* **Precision:** S=documented location known precisely; M=documented location known within 1.5 miles; Both=both "M" and "S" Occurrences.
** **SRank = State Rank.** For definitions, refer to **Table 7.5.**
Source: NJDEP GIS data.



communities of concern are listed in **Table 7.9**. The map identifies potentially sensitive areas, and indicates where custom database searches are needed for land use decision-making. The Grid Map does not include habitat for animal species, and not all areas have been surveyed.

F. Exotic Species

Exotic species (also called alien or introduced species) are a threat to natural areas. Exotic species are those that have been introduced by people to an area intentionally (e.g. as sources of food, for landscaping purposes or the release of unwanted pets) or unintentionally (e.g. in the ballast of a ship or in a load of lumber); thus, they are not part of the original natural community.

Some exotic species cannot compete against native species, and never cause problems. However, some species adapt well to their new environment and proliferate. They compete with native species for space, nutrients and light, which can result in the local elimination of native species. The new environment may harbor no natural population controls, such as insects to eat

Table 7.10: Invasive Exotic Plants

Scientific Name	Common Name	Problems Caused
<i>Acer platanoides</i>	Norway maple	Dispersed seeds easily sprout in shade, crowding out native plants. Canopy produces deep shade and roots produce a toxic substance preventing growth of wildflowers and other trees under its canopy.
<i>Ailanthus altissima</i>	Tree of Heaven	Aggressive in disturbed areas, crowding out native plants.
<i>Alliaria petiolata</i>	Garlic Mustard	Aggressive in shady habitats, crowding out native plants.
<i>Celastrus orbiculatus</i>	Oriental bittersweet	The vine twines around surrounding plants, impeding sap flow. Also makes host plants too heavy, increasing wind damage.
<i>Cirsium arvense</i>	Canada Thistle	Competes with crops and degrades pastures (inedible to livestock).
<i>Elaeagnus umbellata</i>	Autumn Olive	Sprouts vigorously in disturbed areas, produces shade, preventing sprouting of native trees.
<i>Euonymus alatus</i>	Burning Bush	Grows well in many sites, especially upland forests and pastures, crowding out native plants.
<i>Hedera helix</i>	English Ivy	Grows vigorously in deep shade, inhibiting growth of native woodland plants. Vines up tree trunks, adding to weight, and increasing likelihood of wind damage.
<i>Ligustrum vulgare</i>	Common privet	Crowds out more desirable native plants.
<i>Lonicera japonica</i> Thunberg	Japanese honeysuckle	Spreads aggressively in disturbed habitats, crowding out native plants.
<i>Lythrum salicaria</i>	Purple loosestrife	Spreads aggressively in wetlands, eliminating open water habitats and crowding out native plants. Contributes to the loss of wildlife which depend on native wetland plants.
<i>Microstegium vimenium</i>	Japanese stilt grass	Spreads aggressively in disturbed, moist, shady areas, crowding out native plants.
<i>Miscanthus sinensis</i>	Chinese silver grass	Spreads along roadsides and clearings, crowding out native plants.
<i>Polygonum cuspidatum</i>	Japanese Knotweed	Spreads aggressively in disturbed, sunny areas, especially river banks and wetlands, crowding out native plants.
<i>Rosa multiflora</i>	Multiflora rose	Spreads everywhere, except standing water, crowding out native plants and degrading pastures.
<i>Vinca minor</i>	Periwinkle	Spreads in shady forests, crowding out native plants.
Source: Courtney, 1997 (fact sheets)		

the invading plant and thereby control its population. Some of the most problematic invasive exotic species in Holland Township include multiflora rose and autumn olive (see **Table 7.10**). According to Robichaud and Anderson, "...as many as 25 percent of the plant species now present in New Jersey are exotic plants."

Native plants can be susceptible to exotic diseases, which they have not evolved resistance to. The chestnut blight fungus was an accidental introduction which destroyed all mature chestnut trees, once one of the dominant trees in the New Jersey landscape. Another introduced fungus, Dutch elm disease, destroyed the American elm.

In addition, native plants may have little resistance to certain introduced insects, and/or these insects may have no natural enemies in their new surroundings, allowing them to rapidly reach pest proportions. Several introduced insects, which are impacting the woodlands of Holland Township, include the hemlock wooly adelgid, asian longhorned beetle, gypsy moth, and pine looper. They weaken their host trees, which often succumb to successive years of infestation, to diseases carried by the insect pests, or other environmental stresses.

References: Biological Resources

Dominant Vegetation (Land Cover)

Bredon, Thomas F. 1989. "A Preliminary Natural Community Classification for New Jersey." Reprinted from: E. F. Karlin (editor). New Jersey's Rare and Endangered Plants and Animals. Ramapo College Institute for Environmental Studies, Mahway, NJ. 280 pages.

Robichaud, Beryl and Karl H. Anderson. 1994. Plant Communities of New Jersey: A Study in Landscape Diversity. New Brunswick, New Jersey: Rutgers University Press. 287 pages.

Steering Committee of the New Jersey Comparative Risk Project. March 2003. Final Report of the New Jersey Comparative Risk Project. 213 pages.

Wildlife

Bowmans Hill Wildflower Preserve. 2004. Impacts of Deer on Native Plants. www.bhwp.org/native/impact_of_deer.htm

Burnett, Andrew. No Date. White-tailed Deer – Natural History and Autumn Behavior. NJDEP Division of Fish and Wildlife. 1 page. <http://www.njfishandwildlife.com/deer.htm>

Burnett, Andrew. 2002. "The Eastern Coyote in New Jersey" IN New Jersey Fish and Wildlife Digest. NJDEP Division of Fish and Wildlife. 2 pages.

Honachefsky, William B. Ecologically Based Municipal Land Use Planning. 2000. Lewis Publishers: New York. 255 pages.

Latham, Roger Earl and, Jan Beyea, Merlin Benner, Cindy Adams Dunn, Mary Ann Fajvan, Ronald R. Freed, Marrett Grund, Stephen B. Horsley, Ann Fowler Rhoads, and Bryon P. Shissler. January 2005. Managing White-tailed Deer in Forest Habitat From an Ecosystem Perspective. Pennsylvania Case Study Report of the Deer Management Forum convened by Audubon Pennsylvania and the Pennsylvania Habitat Alliance in Harrisburg, Pennsylvania. 340+ pages. http://pa.audubon.org/deer_report.html

NJDEP Division of Fish and Wildlife. December 2000. 2000 Fish IBI Summary Report. 19 pages. <http://www.state.nj.us/dep/wmm/bfbm/download/ibi2000.pdf>

NJDEP Division of Fish and Wildlife. November 2002. 2001 Fish IBI Summary Report. 119 pages. <http://www.state.nj.us/dep/wmm/bfbm/download/ibi2001.pdf>

NJDEP Division of Fish and Wildlife. 2004. 2003 Fish IBI Maps, Results and Data Sheets for sites 60 and 61. <http://www.state.nj.us/dep/wmm/bfbm/download/ibi2003Vol2-60-61.pdf>

- NJDEP Division of Fish and Wildlife. 2005. Watchable Wildlife – Wildlife Diversity Tours. <http://www.njfishandwildlife.com/watchabl.htm>
- NJDEP Division of Fish and Wildlife. 2006a. Bear Information. <http://www.njfishandwildlife.com/bearinfo.htm>
- NJDEP Division of Fish and Wildlife. 2006b. Deer Information. <http://www.njfishandwildlife.com/deer.htm>
- NJDEP Division of Fish and Wildlife. 2006c. Fishing Information. <http://www.state.nj.us/dep/fgw/fishing.htm>
- NJDEP Division of Fish and Wildlife. 2006d. List of Fish Collected During 2001 IBI. <http://www.state.nj.us/dep/wmm/bfbm/fishlist2001.html>
- NJDEP Division of Fish and Wildlife. 2006e. Shad Hotline. <http://www.geocities.com/shadhotline/index.html>
- NJDEP Division of Fish and Wildlife. 2003 and 2004. New Jersey Fish and Wildlife Digest: A summary of Rules and Management Information. Volume 16, numbers 1 and 2 and Volume 17 number 1.
- NJDEP Division of Fish, Game and Wildlife with the Department of Agriculture. 1999. The Governor's Report on Deer Management in New Jersey. 32 pages. <http://www.state.nj.us/dep/fgw/pdf/govdrrpt.pdf>
- NJDEP Office of Natural Lands Management. October 2005. Database search results.
- Sauer, Leslie Jones. 1998. The Once and Future Forest: A Guide to Forest Restoration Strategies. Island Press: Washington, D.C. 382 pages.
- Schwartz, Vicki and David M. Golden. 2002. Field Guide to Reptiles and Amphibians of New Jersey. New Jersey Division of Fish and Wildlife, Endangered and Nongame Species Program. Vineland, NJ. 89 pages.
- Tesauro, Jason. No date. New Jersey's Vernal Pools. NJDEP Endangered and Nongame Species Program. 4 pages.
- Native Plant Society of New Jersey. 2004. Impact of Deer on Biodiversity. http://www.npsnj.org/deer_biodiversity.htm
- Pennsylvania Audubon. 2005. Managing White-tailed Deer in Forest Habitat from an Ecosystem Perspective. http://pa.audubon.org/deer_report.html
- Endangered, Threatened and Special Concern Species**
- Beans, Bruce. Fall 2003. *DEP Commissioner Announces Stronger Protections for Endangered Species, Celebrates 30 years of wildlife protection with innovative exhibit* In Conserve Wildlife Newsletter. Department of Environmental Protection Division of Fish and Wildlife, Endangered and Nongame Species Program: Trenton, New Jersey.
- Bredon, Thomas F. 1989. "A Preliminary Natural Community Classification for New Jersey." Reprinted from: E. F. Karlin (editor). New Jersey's Rare and Endangered Plants and Animals. Ramapo College Institute for Environmental Studies, Mahway, NJ. 280 pages.
- Donato, Melissa. December 1999. Graptemys geographica (map turtle). Michigan State University student http://animaldiversity.ummz.umich.edu/accounts/graptemys/g_geographica.html
- Kenney, Leo, Matthew Burne, Jason Tesauro, Kris Schantz, and Melissa Craddock. No date. Salamanders, Frogs and Turtles of New Jersey's Vernal Pools: A Field Guide. NJDEP Division of Fish and Wildlife, Endangered and Nongame Species Program. 54 pages.
- Newcomb, Lawrence. 1977. Newcomb's Wildflower Guide. Little, Brown and Company: Boston, MA. 490 pages.
- NJDEP Office of Natural Lands Management (ONLM). June 2002. Frequently Asked Questions About The
-
- 7: Biological Resources
March 2007
- Holland Township Natural Resource Inventory
Kratzer Environmental Services

Natural Heritage Grid Map. 2 pages. File name: gisgridfaqs.doc.

NJDEP Office of Natural Lands Management (ONLM). November 2002. Frequently Asked Questions About The Natural Heritage Priority Sites GIS File. 2 pages. File name: gissitefaqs.doc.

NJDEP Office of Natural Lands Management (ONLM). October 18, 2005. Letter Re: Holland Township Environmental Resource Inventory. Natural Heritage Database Search. One page + attachments.

Peterson, Roger Tory. 1980. Peterson Field Guides: Eastern Birds. Fourth Edition. Houghton Mifflin Company, Boston. 384 pages.

Schwartz, Vicki and David M. Golden. 2002. Field Guide to Reptiles and Amphibians of New Jersey. New Jersey Division of Fish and Wildlife, Endangered and Nongame Species Program. Vineland, NJ. 89 pages.

Protecting Habitats

Niles, L.J., M. Valent, P. Winkler and P. Woerner. 2004. New Jersey's Landscape Project, Version 2.0. NJDEP, Division of Fish and Wildlife, Endangered and Nongame Species Program. 58 pages.

NJDEP Office of Natural Lands Management (ONLM). June 2002. Frequently Asked Questions About The Natural Heritage Grid Map. 2 pages. File name: gisgridfaqs.doc.

NJDEP Office of Natural Lands Management (ONLM). November 2002. Frequently Asked Questions About The Natural Heritage Priority Sites GIS File. 2 pages. File name: gissitefaqs.doc.

Exotic Species

Courtney, John Mark. 1997. Fact Sheets: Invasive Exotics. Bowman's Hill Wildflower Preserve, New Hope, PA. http://www.bhwp.org/native/invasive_plants.htm

Newcomb, Lawrence. 1977. Newcomb's Wildflower Guide. Little, Brown and Company: Boston, MA. 490 pages.

Snyder, David and Sylvan R. Kaufman. 2004. An overview of nonindigenous plant species in New Jersey. New Jersey Department of Environmental Protection, Division of Parks and Forestry, Office of Natural Lands Management, Natural Heritage Program: Trenton, NJ. 107 pages.

Robichaud, Beryl and Karl H. Anderson. 1994. Plant Communities of New Jersey: A Study in Landscape Diversity. New Brunswick, New Jersey: Rutgers University Press. 287 pages.

Internet Resources: Biological Resources

Today's Landscape

Forest Health (NJDEP Division of Parks and Forestry):

http://www.state.nj.us/dep/parksandforests/forest/njfs_forest_health.html

Native Plants: Bowman's Hill Wildflower Preserve: <http://www.bhwp.org>

Natural Heritage Program (NJDEP Division of Parks and Forestry)

<http://www.state.nj.us/dep/parksandforests/natural/heritage/index.html>

Wildlife

Endangered and Nongame Species Program (NJDEP, Division of Fish and Wildlife)

Home Page: <http://www.state.nj.us/dep/fgw/ensphome.htm>

Checklists for birds, mammals, reptiles and amphibians of New Jersey, with status (e.g. common or rare):

<http://www.state.nj.us/dep/fgw/chklists.htm>

Vernal Pools: <http://www.njfishandwildlife.com/ensp/vernalpool.htm>

Fish Index of Biotic Integrity (Bureau of Freshwater Fisheries):
<http://www.state.nj.us/dep/wmm/bfbm/fishlist2001.html>

Fish and Wildlife (NJDEP, Division of Fish and Wildlife)
Home Page: <http://www.njfishandwildlife.com/>

Bear Information: <http://www.njfishandwildlife.com/bearinfo.htm>

Deer Information: <http://www.njfishandwildlife.com/deer.htm>

Fishing in NJ: <http://www.state.nj.us/dep/fgw/fishing.htm>

Fish Fact Sheets: <http://www.state.nj.us/dep/fgw/fishfact.htm>

Integrated Biological Aquatics Assessment <http://www.state.nj.us/dep/fgw/ensp/ibaa03.htm>

List of Fishes Collected During 2001 IBI Sampling:
<http://www.state.nj.us/dep/wmm/bfbm/fishlist2001.html>

Regulations (hunting, fishing, nongame): <http://www.njfishandwildlife.com/njregs.htm>

Shad Hotline: <http://www.geocities.com/shadhotline/index.html> or 610-954-0577 or 610-954-0578

Impacts of White-tailed Deer

Deer resistant/tolerant Native Plants (Bowmans Hill Wildflower Preserve)
http://www.bhwp.org/native/native_plant_info_sheets/Deer_Tolerant_Resistant_Native_Plants.pdf

Impacts of deer on native plants (Bowmans Hill Wildflower Preserve)
www.bhwp.org/native/impact_of_deer.htm

The Ecological Impact of White-tailed Deer (PA Audubon)
http://pa.audubon.org/deer_report.html

Impact of Deer on Biodiversity (Native Plant Society of New Jersey)
http://www.npsnj.org/deer_biodiversity.htm

Identification, Delineation and Faunal Surveys of Vernal Pools in New Jersey
<http://www.dbcrrsa.rutgers.edu/ims/vernal/>

Endangered, Threatened and Special Concern Species

Endangered and Nongame Species Program (NJDEP, Division of Fish and Wildlife)
Home Page: <http://www.state.nj.us/dep/fgw/ensphome.htm>

Endangered & Threatened Wildlife of New Jersey List, and links to Natural History Profiles:
<http://www.state.nj.us/dep/fgw/tandespp.htm>

Special Concern – Species Status Listing: <http://www.njfishandwildlife.com/spclspp.htm>

Checklists for birds, mammals, reptiles and amphibians of New Jersey, with status (e.g. common or rare):
<http://www.state.nj.us/dep/fgw/chklists.htm>

Species Reporting Form: <http://www.njfishandwildlife.com/ensp/rprtform.htm> also link to pdf form

Landscape Project Home Page (wildlife habitat mapping for community land-use planning and endangered species conservation): <http://www.njfishandwildlife.com/ensp/landscape/>

Conserve Wildlife Newsletter: <http://www.njfishandwildlife.com/ensp/cwnewslet.htm> or 609-2929400.

Vernal Pools: <http://www.njfishandwildlife.com/ensp/vernalpool.htm>
Fish Index of Biotic Integrity (Bureau of Freshwater Fisheries):
<http://www.state.nj.us/dep/wmm/bfbm/fishlist2001.html>

Natural Heritage Program (NJDEP Division of Parks and Forestry)

Home Page: <http://www.state.nj.us/dep/parksandforests/natural/heritage/index.html>

Rare Species Lists, Reports & Forms:
<http://www.nj.gov/dep/parksandforests/natural/heritage/rarelist.html>

Species Reporting Forms:
<http://www.nj.gov/dep/parksandforests/natural/heritage/repform.html>

Mailing Address: DEP - Division of Parks and Forestry,
Office of Natural Lands Management, Natural Heritage Program, PO Box 404, Trenton,
NJ 08625-0404

Protecting Habitats

Landscape Project (NJDEP, Division of Fish Wildlife): <http://www.njfishandwildlife.com/ensp/landscape/>

NJDEP Office of Natural Lands Management (ONLM):
<http://www.state.nj.us/dep/parksandforests/natural/index.html>

Natural Heritage Program (NJDEP Division of Parks and Forestry):
<http://www.state.nj.us/dep/parksandforests/natural/heritage/index.html>

Backyard Habitats & Conservation

National Audubon Society: http://www.audubon.org/bird/at_home/

New Jersey Audubon Society: <http://www.njaudubon.org/Education/BackyardHabitat/>

NJDEP Division of Fish and Wildlife (grants): <http://www.njfishandwildlife.com/artwhip06.htm>

NJDEP Division of Fish and Wildlife Landowner Incentive Program (LIP) Grants:
http://www.njfishandwildlife.com/ensp/lip_prog.htm

NJDEP Outdoor Classroom links: <http://www.state.nj.us/dep/seeds/syhart/outclass.htm>

USDA Natural Resources Conservation Service: <http://www.nrcs.usda.gov/feature/backyard/>

Exotic Species

Federal efforts concerning invasive species Home Page: <http://www.invasivespecies.gov>

Invasive Species – New Jersey: <http://www.invasivespecies.gov/geog/state/nj.shtml>

Native Plant Society of New Jersey – Invasive Species: http://www.npsnj.org/invasive_species_0103.htm

NJ Forest Service - Forest Health: http://www.state.nj.us/dep/parksandforests/forest/njfs_forest_health.html