

SHEET 2
BLOCK 2

SHEET 2
BLOCK 2

SHEET 3
BLOCK 3

SHEET 5
BLOCK 5

SHEET 6
BLOCK 6

TAX MAP
HOLLAND TOWNSHIP
 Hunterdon County, N.J.

Scale: 1" = 400' May, 1976

Frank W. Bohren, P.E., L.S.
 N.J. LICENSE NO. 3090

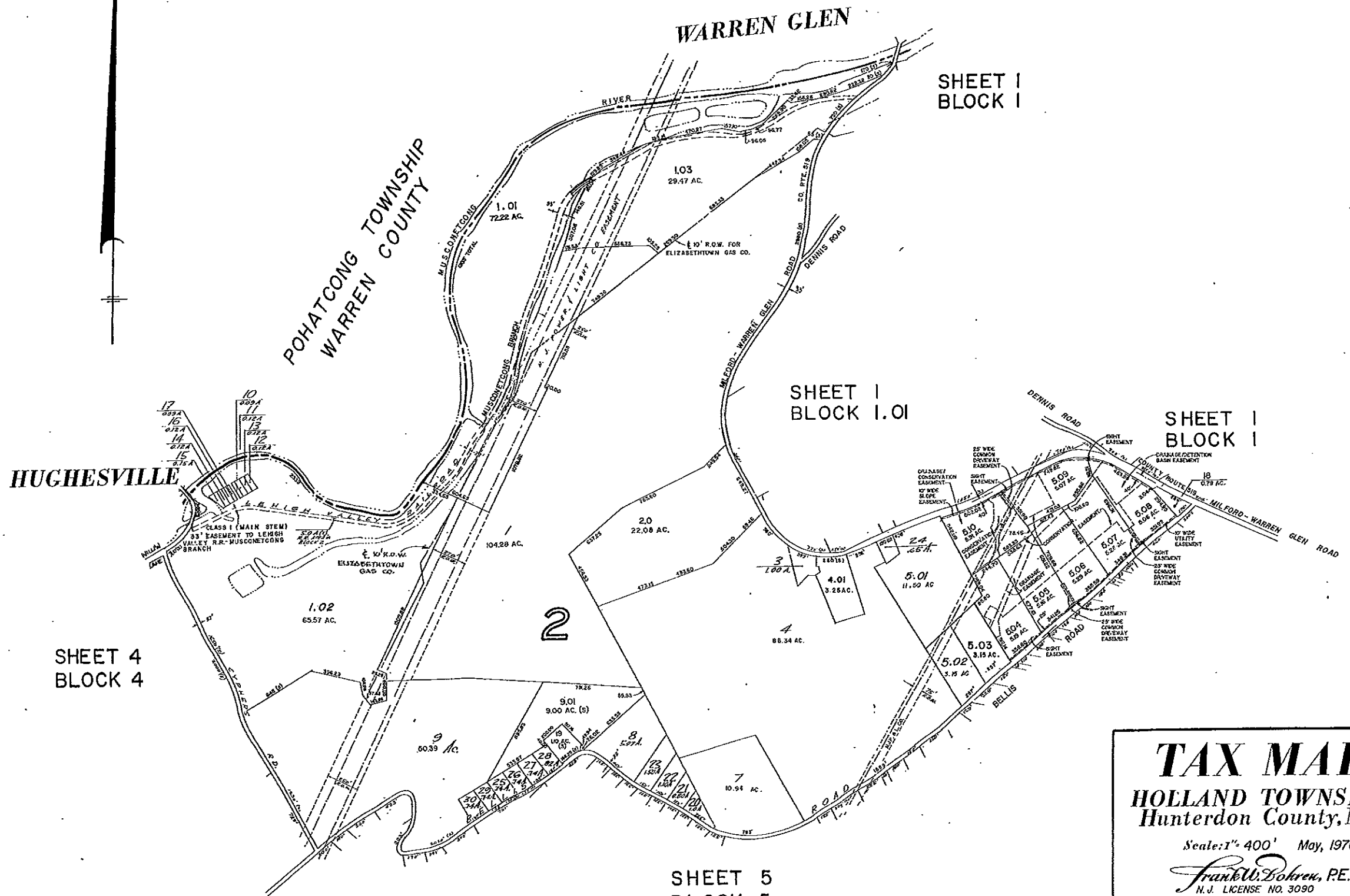
BOHREN and BOHREN
ENGINEERING ASSOCIATES INC.
 CONSULTING CIVIL AND SANITARY ENGINEERS AND LAND SURVEYORS
 30 CHURCH STREET FLEMINGTON, N.J.

BASED ON ORIGINAL MAPS PREPARED BY FRANK W. BOHREN
 DATED JUNE, 1959 — REVISED THROUGH JANUARY, 1976

REVISIONS: JULY 1976, OCTOBER 1976, FEB. 1977, APRIL 1977, MARCH 1978
 1978, NOV. 1978, JAN. 1981, JAN. 1982, FEB. 1983, FEB. 1984, JAN. 1985,
 FEB. 1986, FEB. 1987, FEB. 1988

NEW JERSEY DEPARTMENT OF THE TREASURY
 DIVISION OF TAXATION
 LOCAL PROPERTY AND PUBLIC UTILITY BRANCH
 OFFERED AS A TAX MAP PURSUANT TO THE
 PROVISIONS OF CHAPTER 123, LAWS OF 1975, P.L. 1975-10
 FOR THE DIRECTOR, DIVISION OF TAXATION

DATE 562 SERIAL 10317 1317



TAX MAP
HOLLAND TOWNSHIP
 Hunterdon County, N.J.

Scale: 1" = 400' May, 1976

Frank W. Bohren, P.E., L.S.
 N.J. LICENSE NO. 3090

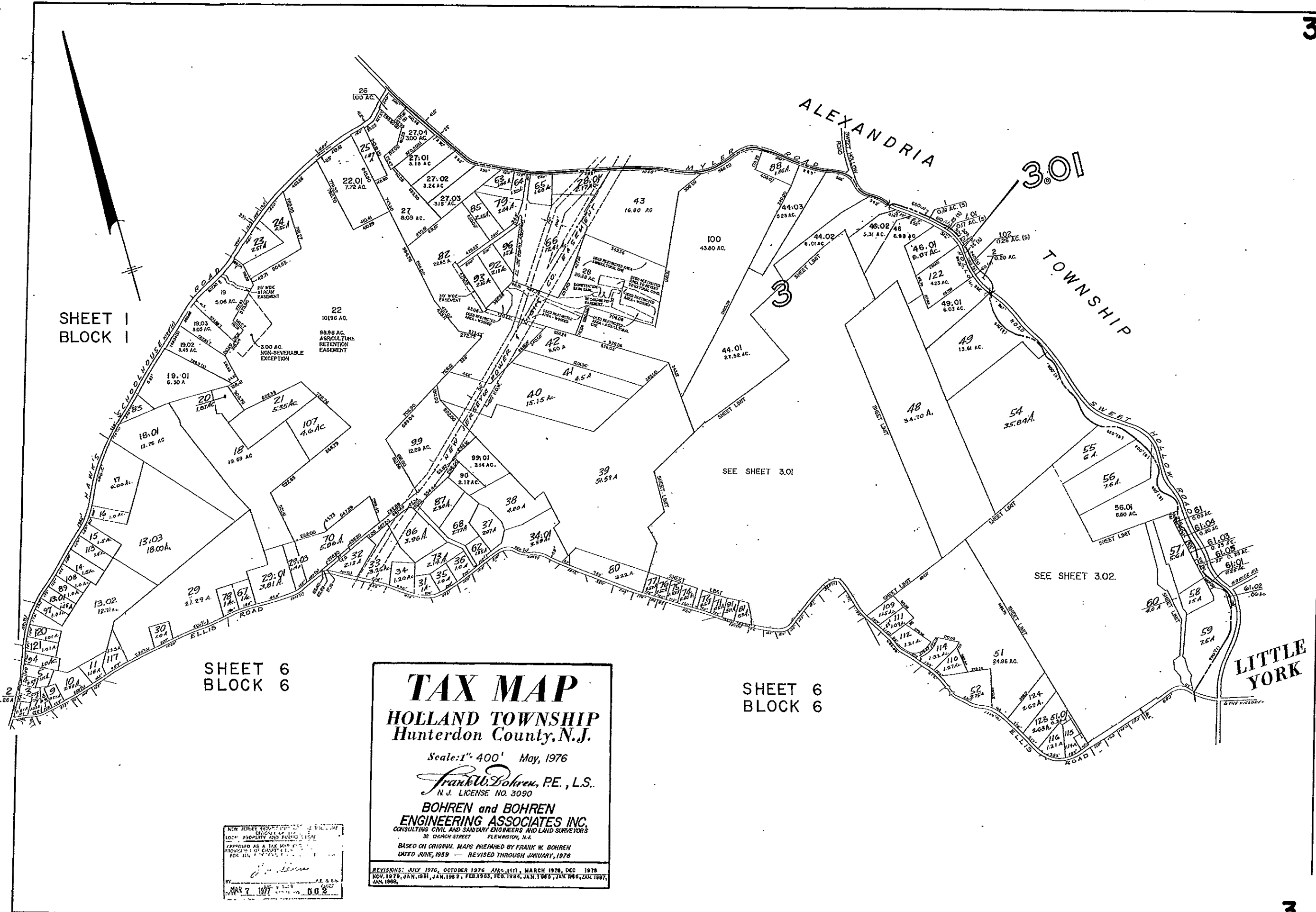
BOHREN and BOHREN
ENGINEERING ASSOCIATES INC.
 CONSULTING CIVIL AND SANITARY ENGINEERS AND LAND SURVEYORS
 38 CHURCH STREET FLEMINGTON, N.J.

BASED ON ORIGINAL MAPS PREPARED BY FRANK W. BOHREN
 DATED JUNE, 1959 — REVISED THROUGH JANUARY, 1976

REVISIONS: JULY 1976, OCTOBER 1976, FEB. 1977, MARCH 1978, DEC. 1978
 NOV. 1979, JAN. 1981, JAN. 1982, FEB. 1983, FEB. 1984, JAN. 1985, JUL. 1986
 JANUARY, JAN. 1969.

NEW JERSEY DEPARTMENT OF THE TREASURY
 DIVISION OF TAXATION
 LOCAL PROPERTY TAX MAPS
 APPROVED AS A TAX MAP PURSUANT TO THE
 PROVISIONS OF CHAPTER 124, TITLE 17, N.J.A.C.
 FOR THE DIRECTOR, DIVISION OF TAXATION

Frank W. Bohren
 P.E., L.S.
 DATE: MAR 7 1977 5:12 PM NO. 562



SHEET 1
BLOCK 1

SHEET 6
BLOCK 6

SHEET 6
BLOCK 6

TAX MAP
HOLLAND TOWNSHIP
 Hunterdon County, N.J.

Scale: 1" = 400' May, 1976

Frank W. Bohren, P.E., L.S.
 N.J. LICENSE NO. 3090

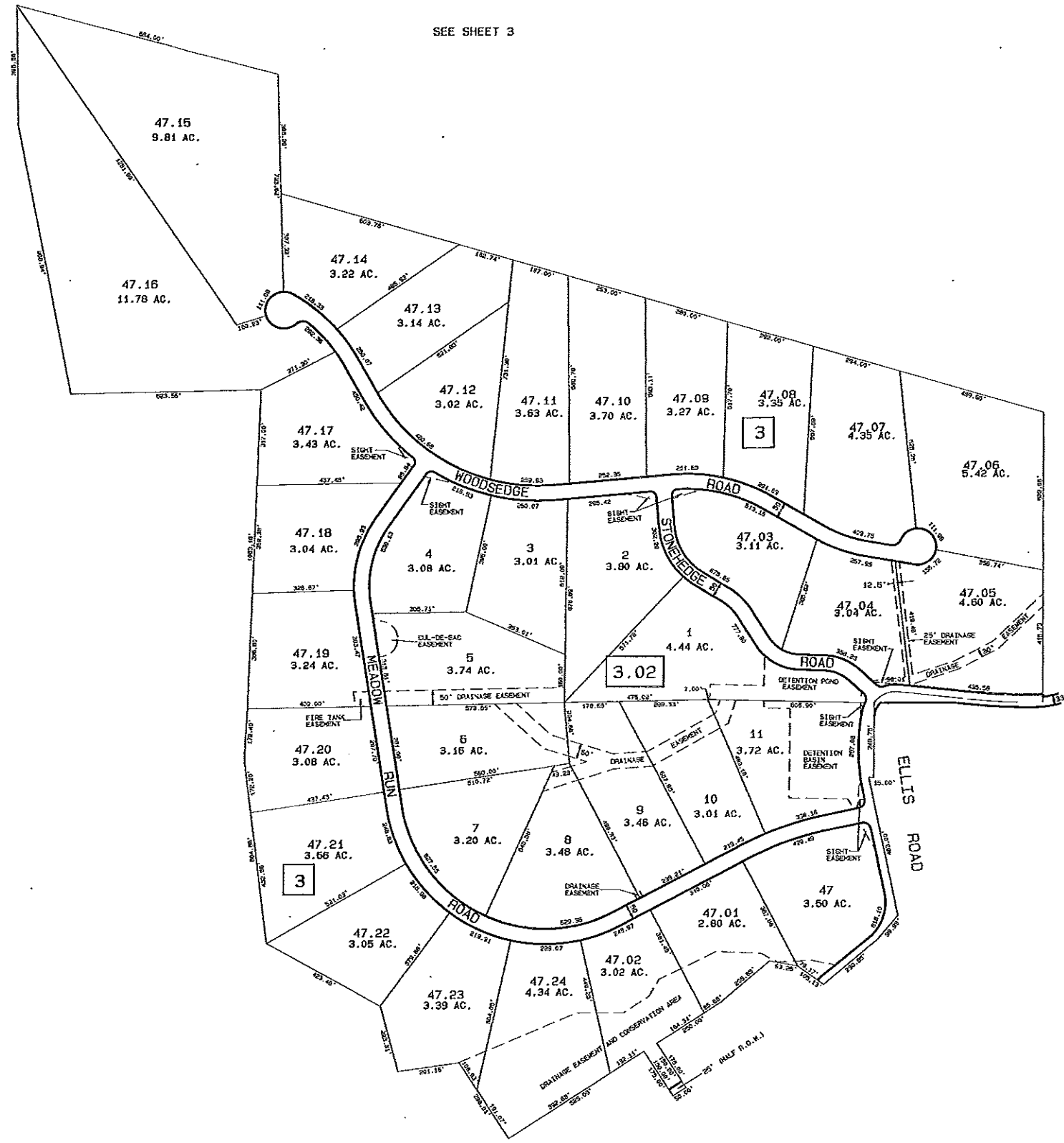
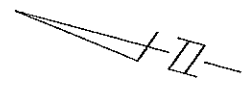
BOHREN and BOHREN
ENGINEERING ASSOCIATES INC.
 CONSULTING CIVIL AND SANITARY ENGINEERS AND LAND SURVEYORS
 38 CHAPIN STREET FLEMINGTON, N.J.

BASED ON ORIGINAL MAPS PREPARED BY FRANK W. BOHREN
 DATED JUNE, 1959 — REVISED THROUGH JANUARY, 1976

REVISIONS: JULY 1976, OCTOBER 1976, JAN.-117, MARCH 1978, DEC 1978
 NOV. 1979, JAN. 1981, JAN. 1982, FEB. 1983, FEB. 1984, JAN. 1985, JAN. 1986, JAN. 1987,
 JAN. 1988.

NEW JERSEY DEPARTMENT OF TREASURY
 LOCAL PROPERTY AND FINANCE DIVISION
 APPROVED AS A TAX MAP BY THE
 COMMISSIONER OF TREASURY AND
 FINANCE ON 11/15/77

MAY 7 1977



SEE SHEET 3

SEE SHEET 3

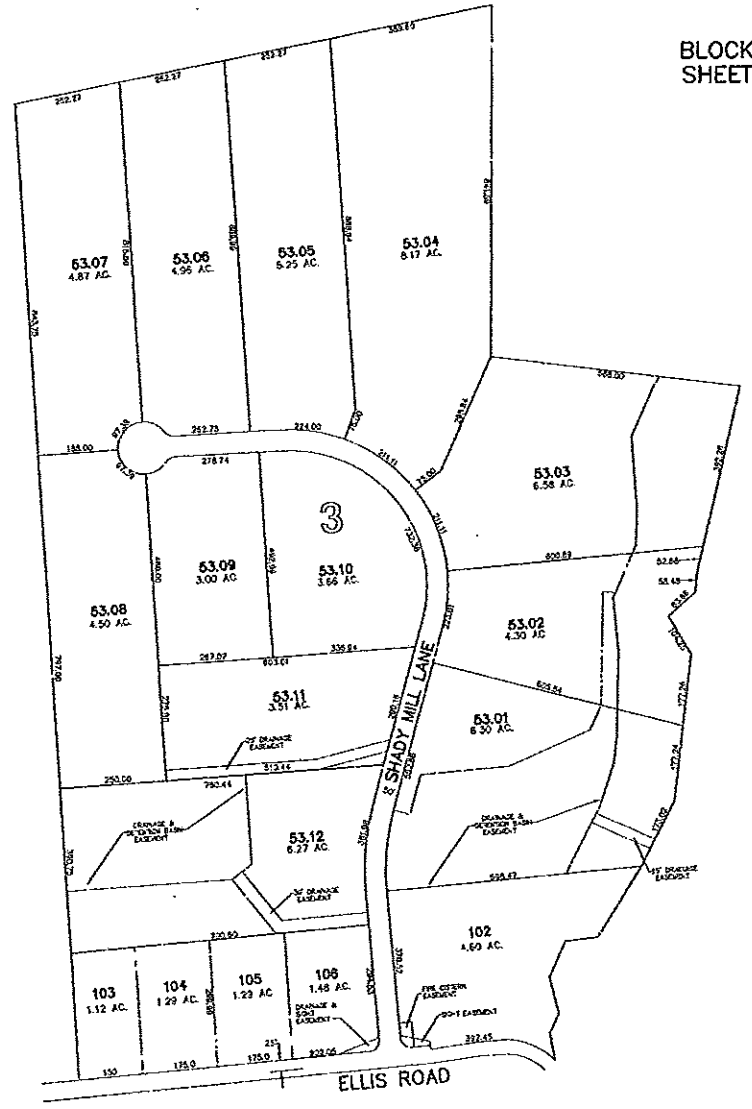
SEE SHEET 3

TAX MAP
 TOWNSHIP OF HOLLAND
 HUNTERDON COUNTY, NEW JERSEY
 SCALE: 1"=200' DECEMBER 1990
 H. CLAY McELDOWNEY, P.E., L.S.
 STUDER AND McELDOWNEY, P.A.
 120 HIGHWAY 22, CLINTON, NEW JERSEY

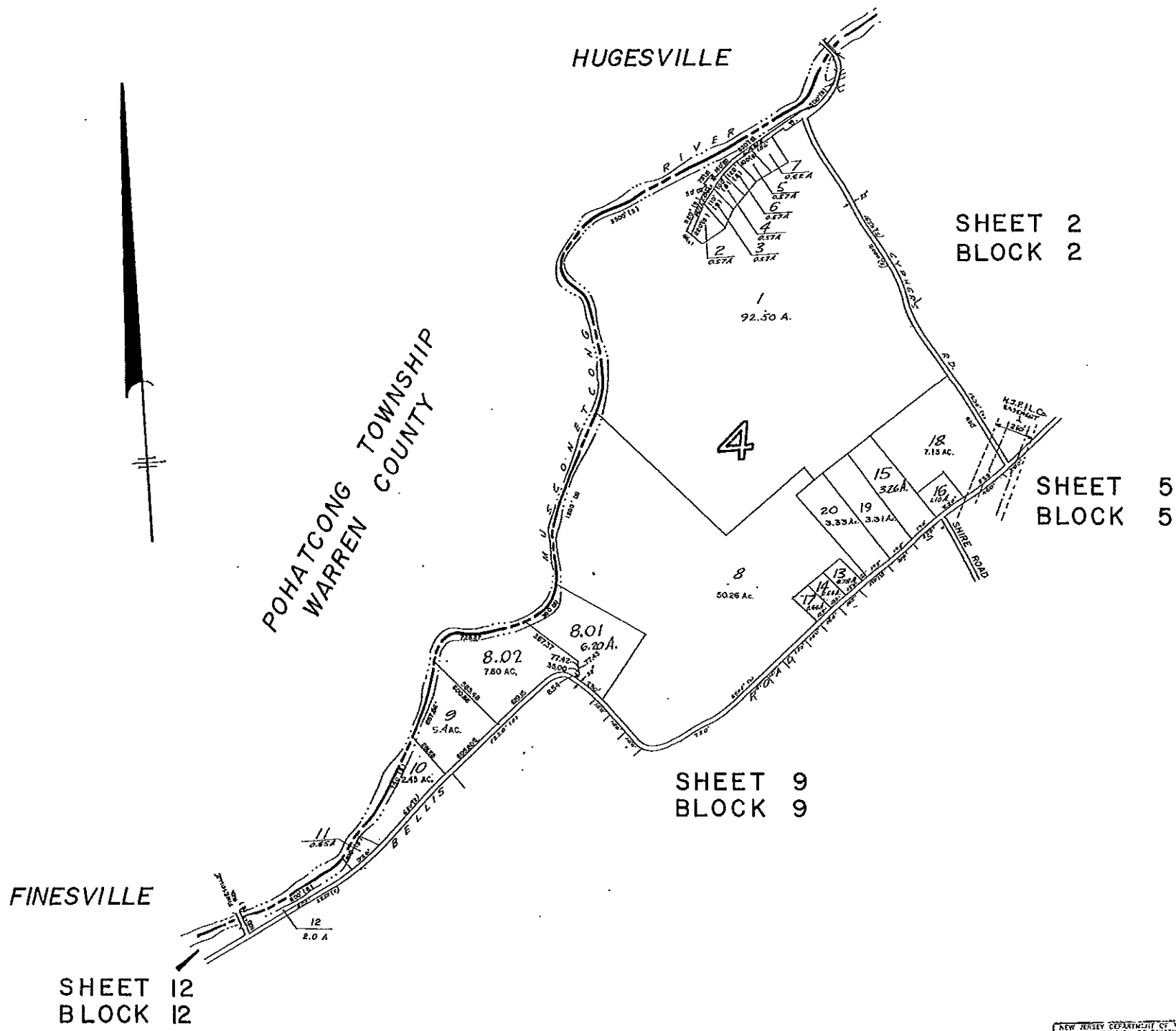


BLOCK 3
SHEET 3

BLOCK 3
SHEET 3

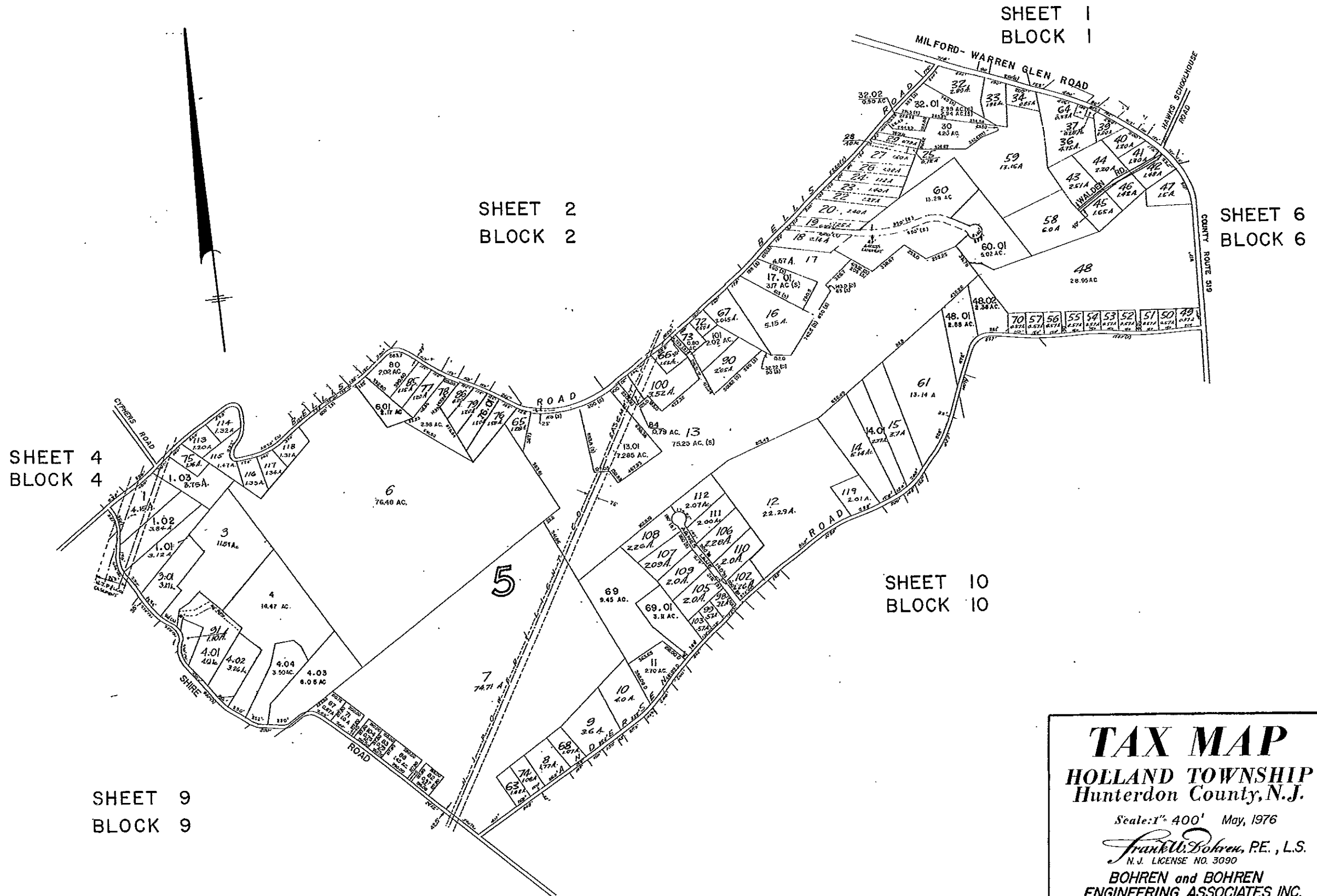


TAX MAP
 TOWNSHIP OF HOLLAND
 HUNTERDON COUNTY, NEW JERSEY
 SCALE: 1"= 200' JULY 2002
 H. CLAY McELDOWNEY, P.E., L.S.
 STUDER AND McELDOWNEY, P.A.
 120 W. MAIN ST., CLINTON, NEW JERSEY



NEW JERSEY DEPARTMENT OF THE TREASURY
 DIVISION OF TAXATION
 LOCAL PROPERTY AND PUBLIC UTILITY TAXES
 APPROVED AS A TAX MAP PURSUANT TO THE
 PROVISIONS OF CHAPTER 125, LAWS OF 1975
 FOR THE DIRECTOR, DIVISION OF TAXATION
J. W. Bohren
 BY: MAR 7 1977 SERIAL NO. 562

TAX MAP
HOLLAND TOWNSHIP
 Hunterdon County, N.J.
 Scale: 1" = 400' May, 1976
Frank W. Bohren, P.E., L.S.
 N. J. LICENSE NO. 3090
BOHREN and BOHREN
ENGINEERING ASSOCIATES INC.
 CONSULTING CIVIL AND SANITARY ENGINEERS AND LAND SURVEYORS
 30 CHURCH STREET FLEMINGTON, N.J.
 BASED ON ORIGINAL MAPS PREPARED BY FRANK W. BOHREN
 DATED JUNE, 1959 — REVISED THROUGH JANUARY, 1976
 REVISIONS: OCTOBER 1976, MARCH 1978, DEC. 1978, NOV. 1979, JAN. 1981, JAN. 1982,
 FEB. 1983, FEB. 1984, JAN. 1985, JAN. 1986, JAN. 1987, JAN. 1988



TAX MAP
HOLLAND TOWNSHIP
Hunterdon County, N.J.

Scale: 1" = 400' May, 1976

Frank W. Bohren, P.E., L.S.
 N.J. LICENSE NO. 3090

BOHREN and BOHREN
ENGINEERING ASSOCIATES INC.
 CONSULTING CIVIL AND SANITARY ENGINEERS AND LAND SURVEYORS
 32 CHURCH STREET FLEMINGTON, N.J.

BASED ON ORIGINAL MAPS PREPARED BY FRANK W. BOHREN
 DATED JUNE, 1959 — REVISED THROUGH JANUARY, 1976

REVISIONS: JULY 1976, OCTOBER 1976, APRIL 1977, NOV. 1977, MARCH 1978
 DEC. 1978, NOV. 1979, JAN. 1981, JAN. 1982, FEB. 1983, FEB. 1984, JAN. 1985,
 FEB. 1986, JAN. 1987, JAN. 1988.

NEW JERSEY DEPARTMENT OF THE TREASURY
 DIVISION OF REVENUE
 LOCAL PROPERTY AND PUBLIC UTILITY BRANCH
 APPROVED AS A TAX MAP PURSUANT TO THE
 PROVISIONS OF CHAPTER 123, LAWS OF 1971, IN
 ACCORDANCE WITH THE PROVISIONS OF LAWS OF 1971
 FOR THE DIRECTOR, DIVISION OF REVENUE

Frank W. Bohren

BY: *Frank W. Bohren* P.E. & L.S.
 DATE: MAR 7 1977 SERIAL NO. 502