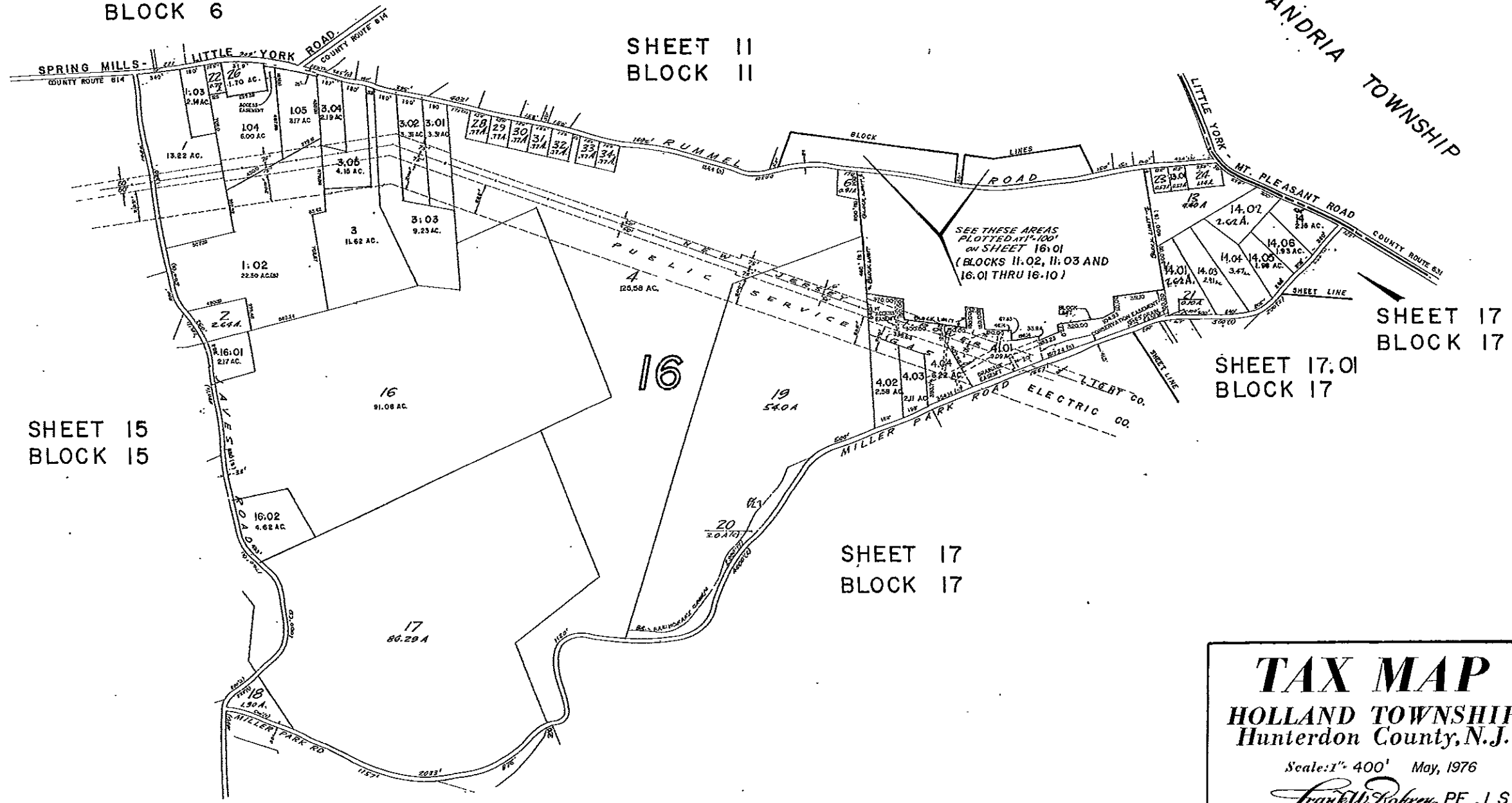


SHEET 6
BLOCK 6

SHEET 11
BLOCK 11

ALEXANDRIA TOWNSHIP



SEE THESE AREAS
PLOTTED AT 1"=100'
ON SHEET 16.01
(BLOCKS 11.02, 11.03 AND
16.01 THRU 16.10)

SHEET 15
BLOCK 15

SHEET 17
BLOCK 17

SHEET 17.01
BLOCK 17

SHEET 17
BLOCK 17

TAX MAP
HOLLAND TOWNSHIP
 Hunterdon County, N.J.

Scale: 1" = 400' May, 1976

Frank W. Bohren, P.E., L.S.
 N.J. LICENSE NO. 3090

BOHREN and BOHREN
ENGINEERING ASSOCIATES INC.
 CONSULTING CIVIL AND SANITARY ENGINEERS AND LAND SURVEYORS
 32 DORCH STREET FLEMINGTON, N.J.

BASED ON ORIGINAL MAPS PREPARED BY FRANK W. BOHREN
 DATED JUNE, 1959 — REVISED THROUGH JANUARY, 1976

REVISIONS: OCTOBER 1976, FEB. 1977 APR. 1977, MARCH 1978, DEC. 1978
 NOV. 1979, JAN. 1981, JAN. 1982, FEB. 1983, FEB. 1984, JAN. 1985, JAN. 1986,
 JAN. 1987, JAN. 1988

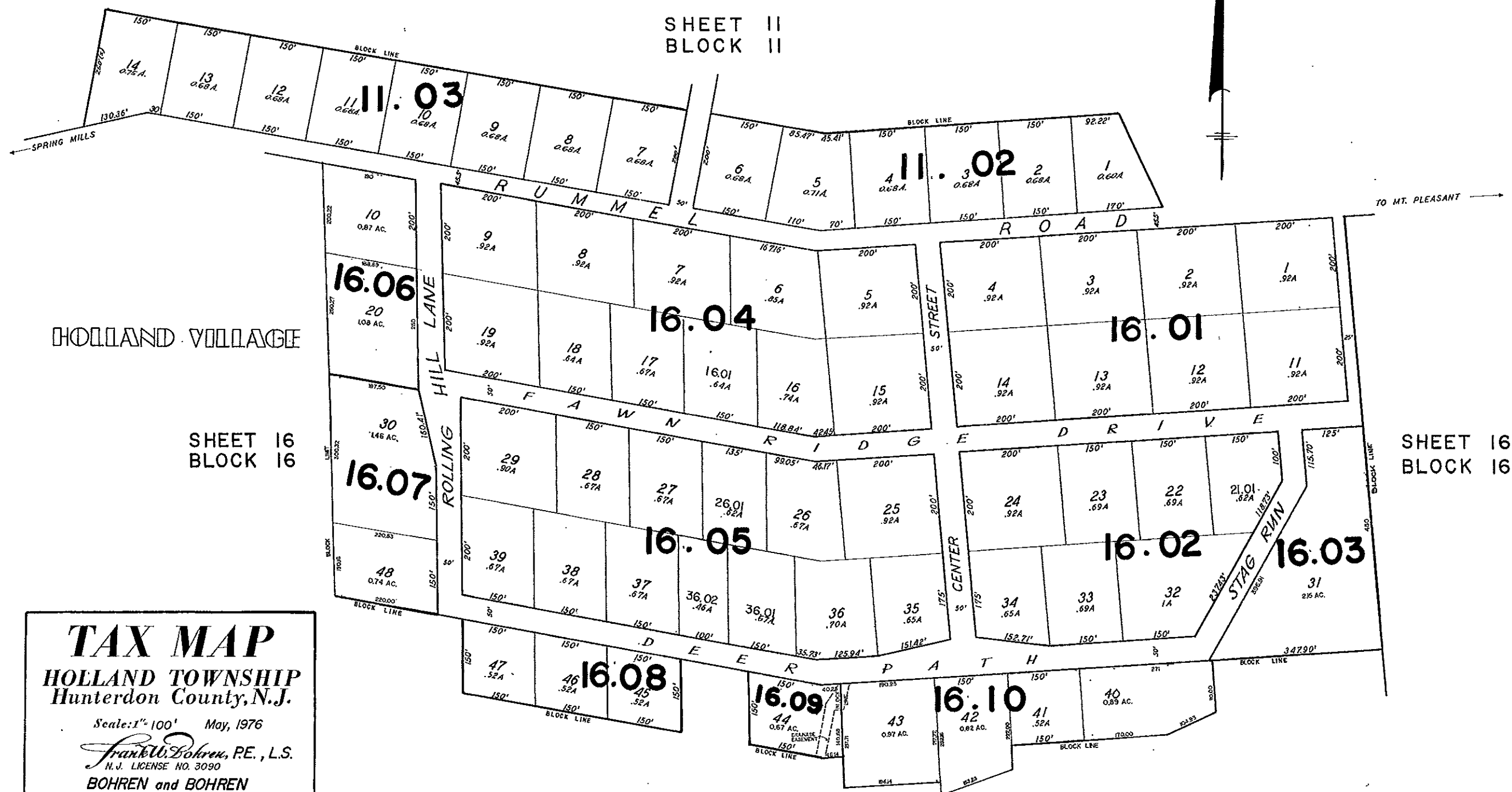
NEW JERSEY DEPARTMENT OF THE TREASURER
 CHIEF OF TAXATION
 LOCAL PROPERTY AND PUBLIC UTILITY TAXES

APPROVED AS A TAX MAP PURSUANT TO THE
 PROVISIONS OF CHAPTER 174, LAWS OF 1953, AS
 AMENDED, FOR THE DIRECTOR, DIVISION OF TAXATION

J. N. Deans

BY: *J. N. Deans* P.E. & L.S.
 DATE: MAR 7 1977 5003
 SERIAL NO. 562

SHEET II
BLOCK II



HOLLAND VILLAGE

SHEET 16
BLOCK 16

SHEET 16
BLOCK 16

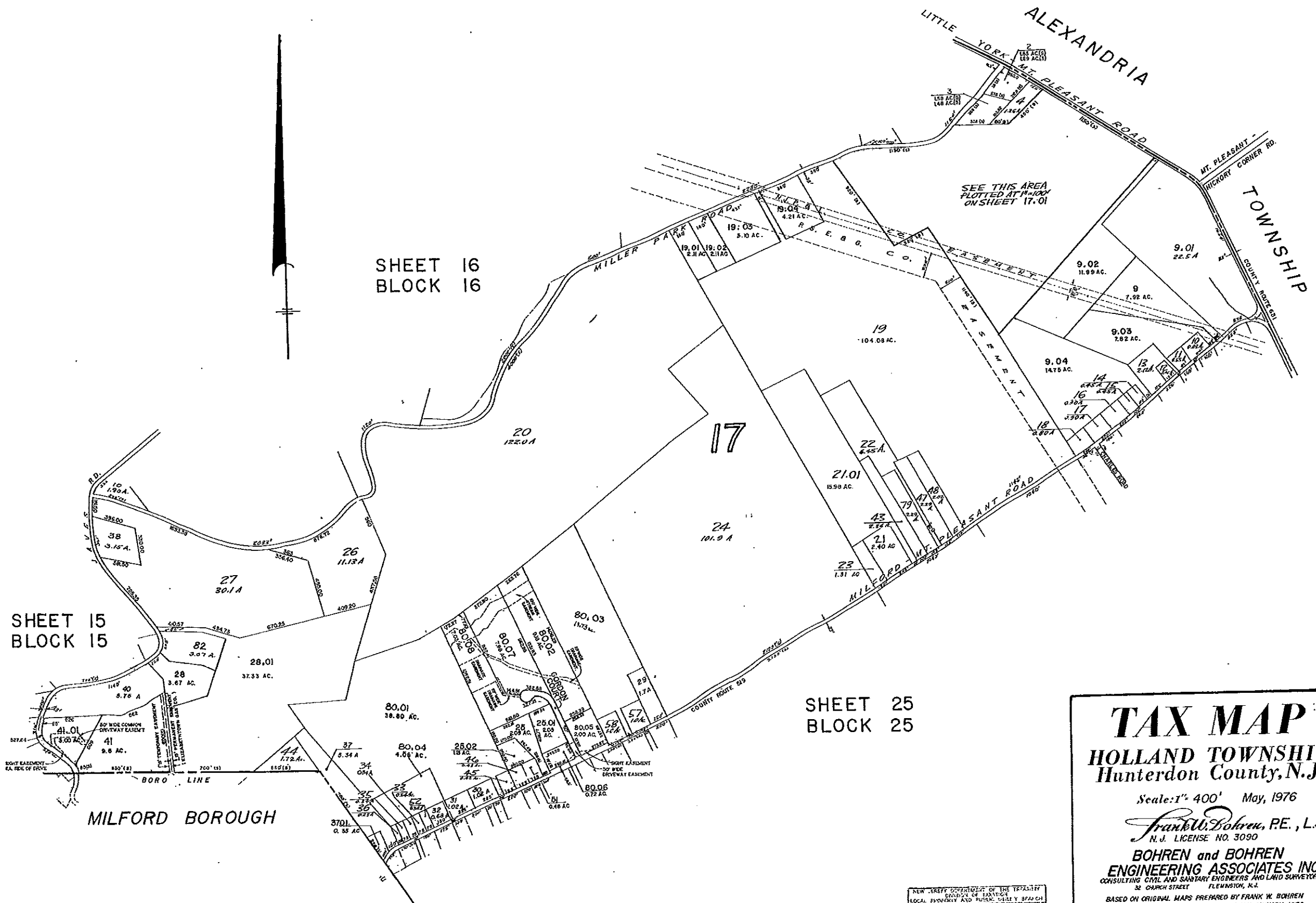
TAX MAP
HOLLAND TOWNSHIP
 Hunterdon County, N.J.
 Scale: 1" = 100' May, 1976
Frank W. Bohren, RE., L.S.
 N.J. LICENSE NO. 3090
BOHREN and BOHREN
ENGINEERING ASSOCIATES INC.
 CONSULTING CIVIL AND SANITARY ENGINEERS AND LAND SURVEYORS
 32 CHURCH STREET FLEMINGTON, N.J.
 BASED ON ORIGINAL MAPS PREPARED BY FRANK W. BOHREN
 DATED JUNE, 1959 — REVISED THROUGH JANUARY, 1976

REVISIONS: OCTOBER 1976, MARCH 1978, DEC. 1978, NOV. 1979, JAN. 1981
 JAN. 1982, FEB. 1983, FEB. 1984, JAN. 1985, JAN. 1986, JAN. 1987, JAN. 1988,

SHEET 16
BLOCK 16

NEW JERSEY DEPARTMENT OF THE TREASURY
 DIVISION OF TAXATION
 LOCAL PROPERTY AND PUBLIC UTILITY BRANCH
 APPROVED AS A TAX MAP PURSUANT TO THE
 PROVISIONS OF CHAPTER 175, LAWS OF 1974, I.C.
 FOR THE DIRECTOR, DIVISION OF TAXATION.

J. H. [Signature]
 P.E. & L.S.
 CHIEF
 MAR 7 1977 SERIAL NO. 562



TAX MAP
HOLLAND TOWNSHIP
 Hunterdon County, N.J.

Scale: 1" = 400' May, 1976

Frank W. Bohren, P.E., L.S.
 N.J. LICENSE NO. 3090

BOHREN and BOHREN
ENGINEERING ASSOCIATES INC.
 CONSULTING CIVIL AND SANITARY ENGINEERS AND LAND SURVEYORS
 32 CARRICH STREET FLEMINGTON, N.J.

BASED ON ORIGINAL MAPS PREPARED BY FRANK W. BOHREN
 DATED JUNE, 1959 — REVISED THROUGH JANUARY, 1976

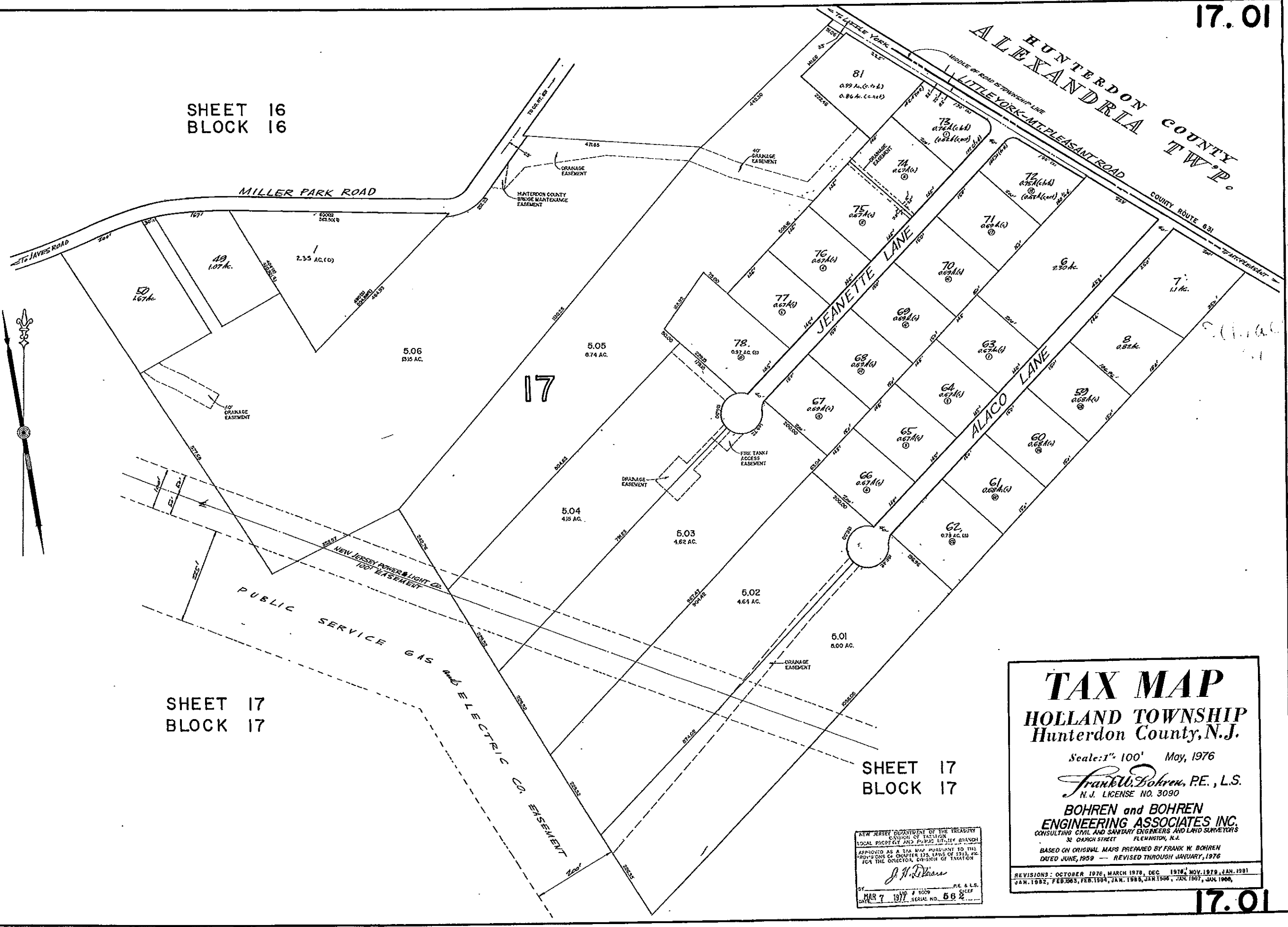
REVISIONS: JULY 1976, OCTOBER 1976, MARCH 1978, DEC. 1978, NOV. 1979
 JAN. 1981, JAN. 1982, FEB. 1983, FEB. 1984, JAN. 1985, JAN. 1986, JAN. 1987, JAN. 1988

NEW JERSEY DEPARTMENT OF THE TREASURY
 DIVISION OF TAXATION
 LOCAL PROPERTY AND PERSONAL INCOME TAXES
 PROVIDED AS A TAX MAP PURSUANT TO THE
 PROVISIONS OF CHAPTER 175, LAWS OF 1951, AS
 AMENDED

J. N. Deane

BY *J. N. Deane* P.E. L.S.
 DATE: MAR 7 1977 4:50P
 SERIAL NO. 562

SHEET 16
BLOCK 16



17

SHEET 17
BLOCK 17

SHEET 17
BLOCK 17

TAX MAP
HOLLAND TOWNSHIP
 Hunterdon County, N.J.

Scale: 1" = 100' May, 1976

Frank W. Bohren, P.E., L.S.
 N.J. LICENSE NO. 3090

BOHREN and BOHREN
ENGINEERING ASSOCIATES INC.
 CONSULTING CIVIL AND SANITARY ENGINEERS AND LAND SURVEYORS
 32 CHURCH STREET FLEMINGTON, N.J.

BASED ON ORIGINAL MAPS PREPARED BY FRANK W. BOHREN
 DATED JUNE, 1959 — REVISED THROUGH JANUARY, 1976

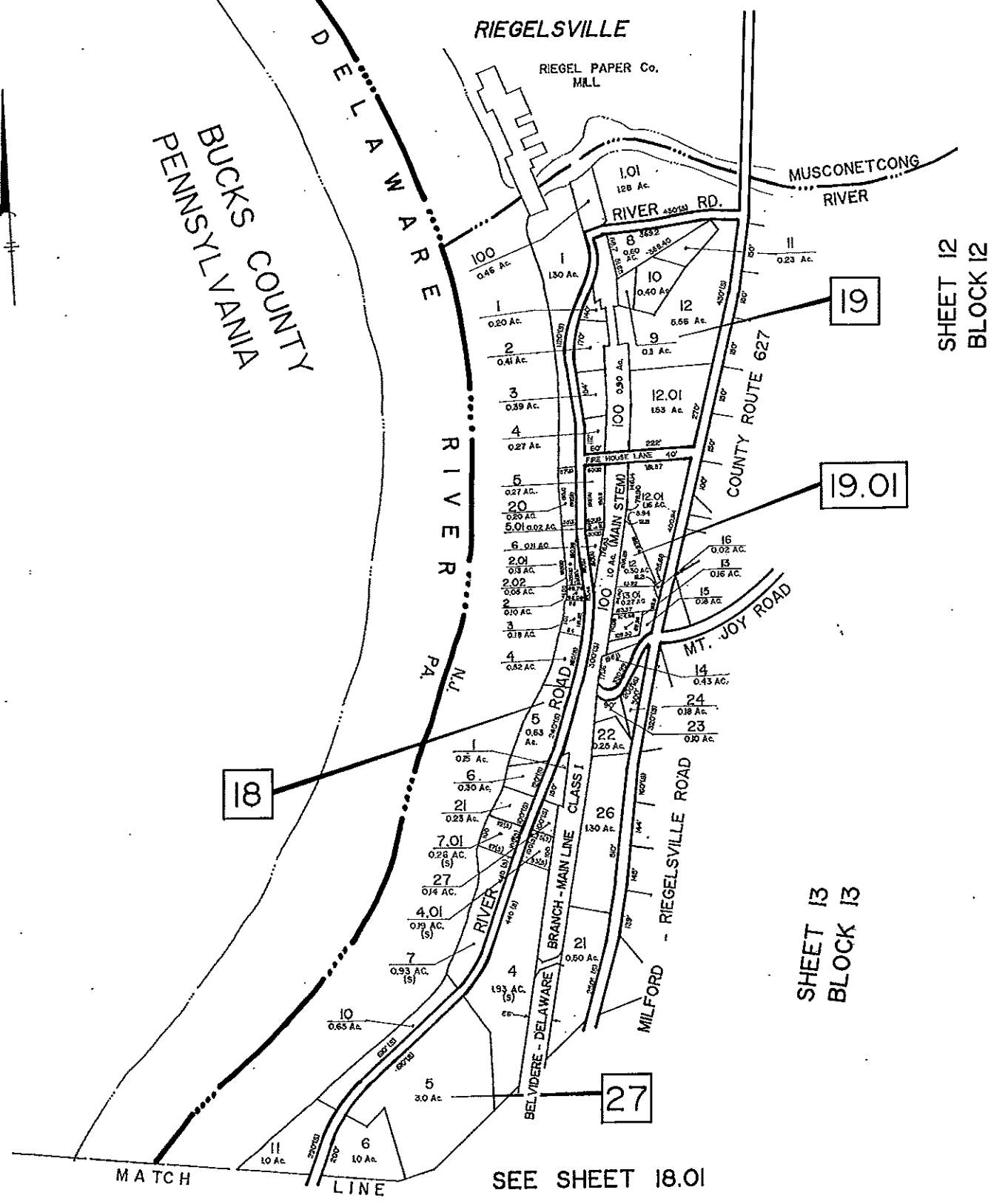
REVISIONS: OCTOBER 1976, MARCH 1978, DEC 1978, NOV 1979, JAN 1981
 JAN. 1982, FEB. 1983, FEB. 1984, JAN. 1985, JAN 1986, JAN 1987, JAN 1988,

NEW JERSEY DEPARTMENT OF THE TREASURY
 DIVISION OF TAXATION
 LOCAL PROPERTY AND PUBLIC UTILITY BRANCH
 APPROVED AS A TAX MAP PURSUANT TO THE
 PROVISIONS OF CHAPTER 175, LAWS OF 1915, P.L.
 FOR THE OFFICE OF THE DIVISION OF TAXATION

J. H. D'Amico

BY: MAR 7 1977 SERIAL NO. 662

POHATCONG TOWNSHIP
WARREN COUNTY



BUCKS COUNTY
PENNSYLVANIA

18

19

19.01

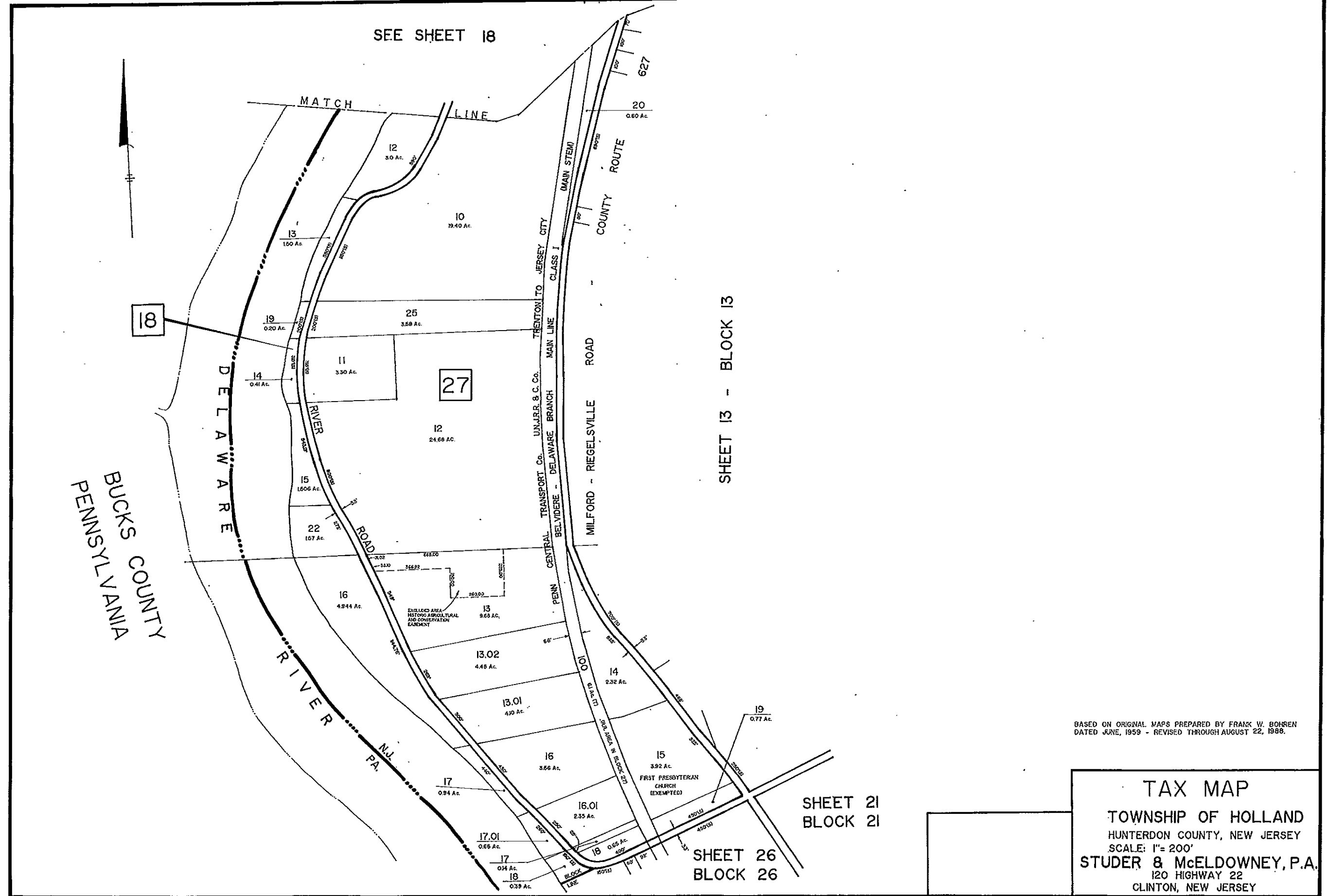
SHEET 13
BLOCK 13

SHEET 12
BLOCK 12

SEE SHEET 18.01

BASED ON ORIGINAL MAPS PREPARED BY FRANK W. BOHREN
DATED JUNE, 1959 - REVISED THROUGH AUGUST 22, 1988.

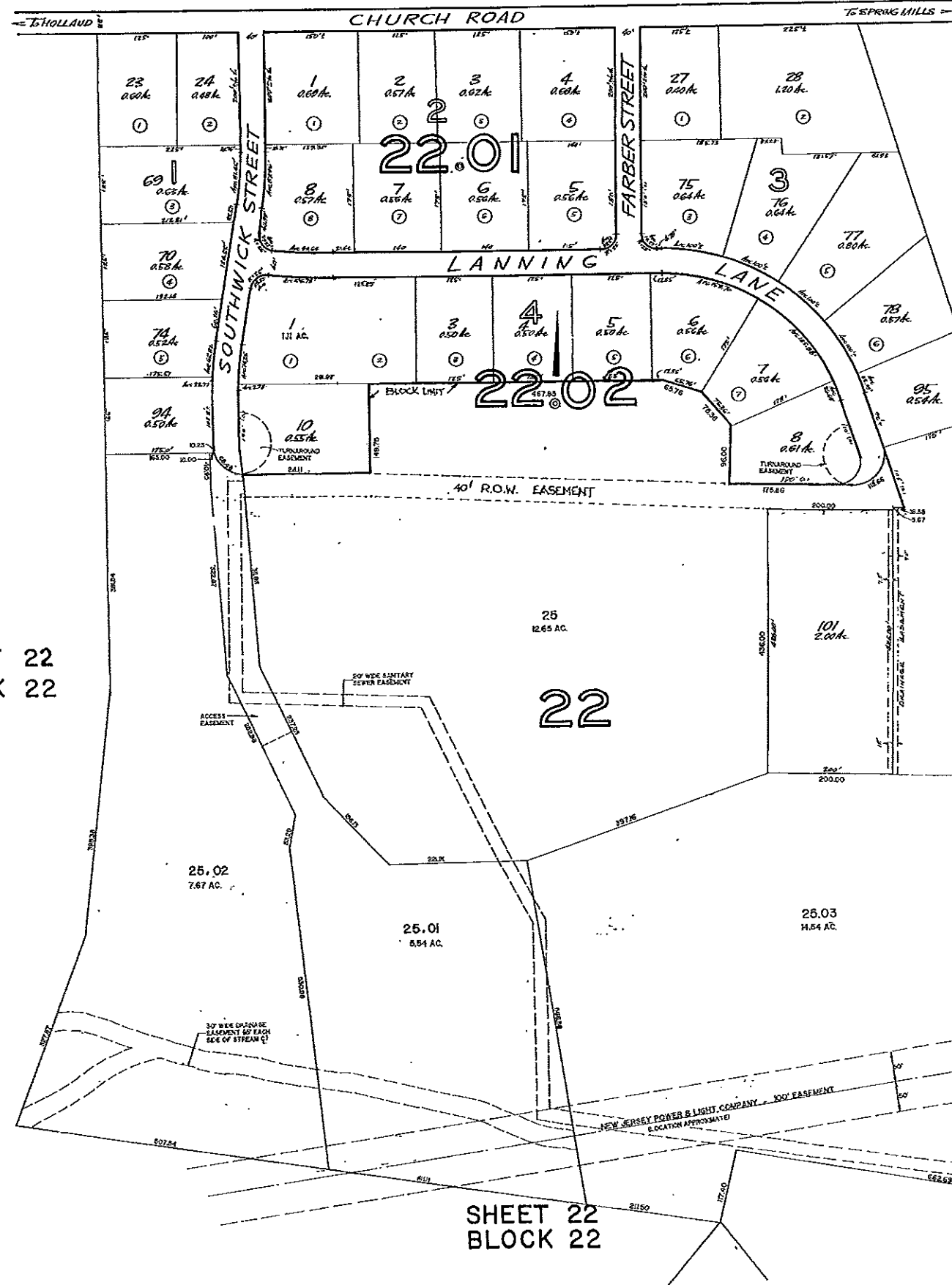
TAX MAP
 TOWNSHIP OF HOLLAND
 HUNTERDON COUNTY, NEW JERSEY
 SCALE: 1" = 200'
STUDER & McELDOWNEY, P.A.
 120 HIGHWAY 22
 CLINTON, NEW JERSEY



BASED ON ORIGINAL MAPS PREPARED BY FRANK W. BOHREN
 DATED JUNE, 1959 - REVISED THROUGH AUGUST 22, 1988.

TAX MAP
 TOWNSHIP OF HOLLAND
 HUNTERDON COUNTY, NEW JERSEY
 SCALE: 1" = 200'
STUDER & McELDOWNEY, P.A.
 120 HIGHWAY 22
 CLINTON, NEW JERSEY

SHEET 10 BLOCK 10



NOTE: THIS SHEET OF THE TAX MAP HAS BEEN REDRAWN AT A SMALLER SCALE, SEPTEMBER, 1966 TO SHOW ADDITIONAL STREETS AND LOTS IN THIS AREA.

LOTS SHOWN HERE IN BLOCK 22.02 NUMBERED 1, 2, 3, 4, 5, 6 and 7 WERE FORMERLY NUMBERED 79, 80, 81, 82, 83, 84 and 85 IN BLOCK 22.

SMALL BLOCK NUMBERS AND LOT NUMBERS IN SMALL CIRCLES ARE THOSE OF FILED MAP OF "HOLLAND RIDGE ESTATES."

SHEET 22
BLOCK 22

SHEET 22
BLOCK 22

SHEET 22
BLOCK 22

SHEET 23
BLOCK 23

NEW JERSEY DEPARTMENT OF THE TREASURY
DIVISION OF LOCAL PROPERTY AND TAXATION
APPROVED AS A TAX MAP PURSUANT TO THE
PROVISIONS OF CHAPTER 173, LAWS OF 1964, P.L.
FOR THE COMMISSIONER, DIVISION OF TAXATION

J. H. Deans

BY: LIC. # 5009 P.E. & L.S.
DATE: MAR 7 1977 SERIAL NO. 868

TAX MAP
HOLLAND TOWNSHIP
 Hunterdon County, N.J.

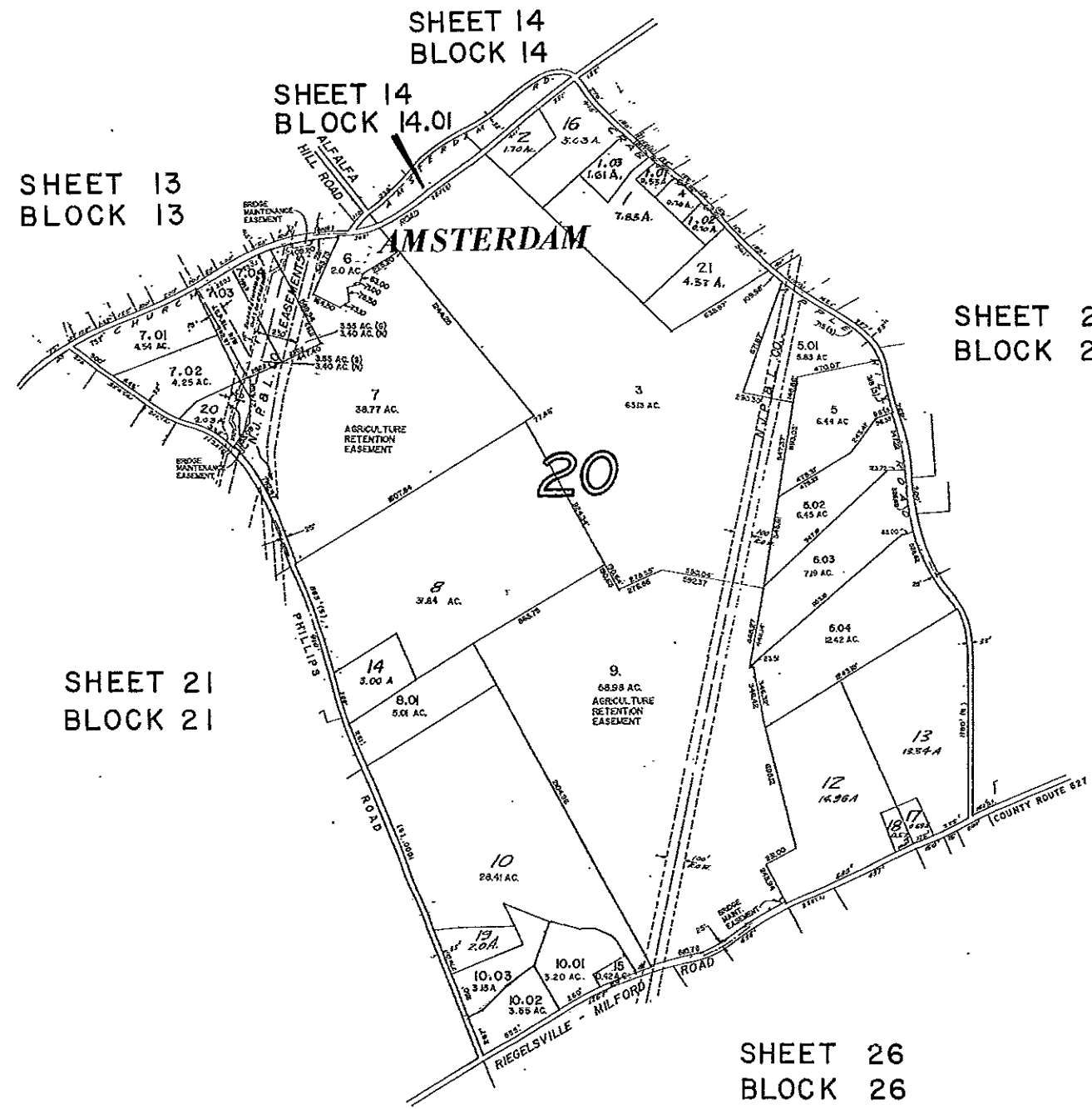
Scale: 1" = 100' May, 1976

Frank W. Bohren, P.E., L.S.
 N.J. LICENSE NO. 3090

BOHREN and BOHREN
ENGINEERING ASSOCIATES INC.
 CONSULTING CIVIL AND SANITARY ENGINEERS AND LAND SURVEYORS
 37 CHURCH STREET FLEMINGTON, N.J.

BASED ON ORIGINAL MAPS PREPARED BY FRANK W. BOHREN
 DATED JUNE, 1959 — REVISED THROUGH JANUARY, 1976

REVISIONS: OCTOBER 1976, FEB. 1977, MARCH 1978, DEC. 1979, NOV. 1979
 JAN. 1981, JAN. 1982, FEB. 1983, FEB. 1984, JAN. 1985, JAN. 1986, JAN. 1987,
 JAN. 1988



SHEET 13
BLOCK 13

SHEET 14
BLOCK 14
SHEET 14
BLOCK 14.01

SHEET 22
BLOCK 22

SHEET 21
BLOCK 21

SHEET 26
BLOCK 26

TAX MAP
HOLLAND TOWNSHIP
 Hunterdon County, N.J.

Scale: 1" = 400' May, 1976

Frank W. Bohren, P.E., L.S.
 N.J. LICENSE NO. 3090

BOHREN and BOHREN
ENGINEERING ASSOCIATES INC.
 CONSULTING CIVIL AND SANITARY ENGINEERS AND LAND SURVEYORS
 32 CHURCH STREET FLEMINGTON, N.J.

BASED ON ORIGINAL MAPS PREPARED BY FRANK W. BOHREN
 DATED JUNE, 1959 — REVISED THROUGH JANUARY, 1976

REVISIONS: JULY 1976, OCTOBER 1976, MARCH 1978, DEC. 1978, NOV. 1979
 JAN. 1981, JAN. 1982, FEB. 1983, FEB. 1984, JAN. 1985, JAN. 1986, JAN. 1987, JAN. 1988

NEW JERSEY DEPARTMENT OF THE TREASURY
 LOCAL PROPERTY TAX SECTION
 APPROVED AS A TAX MAP PURSUANT TO THE
 PROVISIONS OF CHAPTER 115, LAWS OF 1975, AND
 FOR THE DEPARTMENT, DIVISION OF TAXATION

J. H. Deane

BY: MAR 7 1977
 DATE: MAR 7 1977
 SERIAL NO. 662