

TAX MAP

HOLLAND TOWNSHIP Hunterdon County, N.J.

Scale: 1" = 400' May, 1976

Frank W. Bohren, P.E., L.S.
N.J. LICENSE NO. 3090

BOHREN and BOHREN
ENGINEERING ASSOCIATES INC.
CONSULTING CIVIL AND SANITARY ENGINEERS AND LAND SURVEYORS
32 CHURCH STREET FLEMINGTON, N.J.

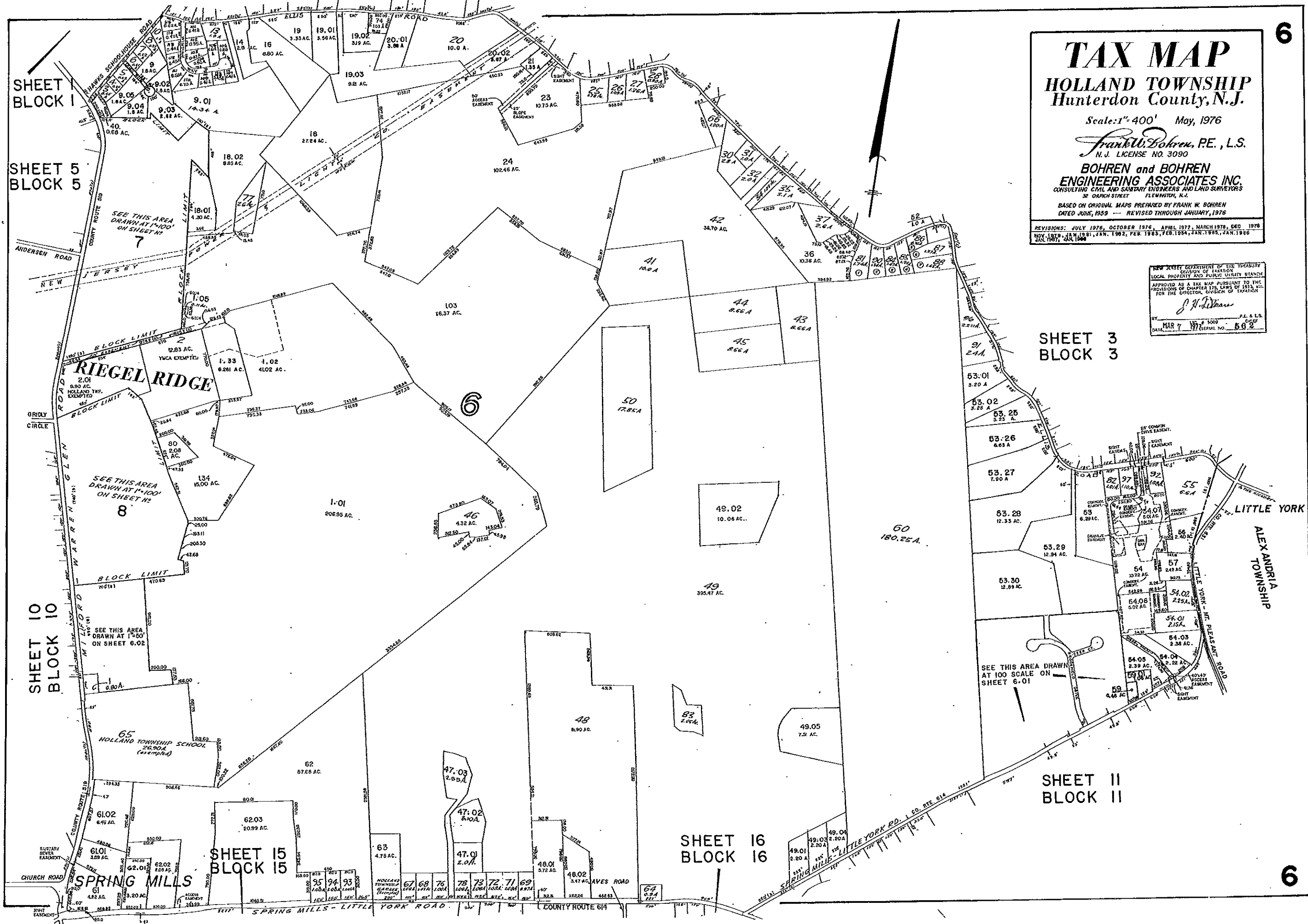
BASED ON ORIGINAL MAPS PREPARED BY FRANK W. BOHREN
DATED JUNE, 1959 — REVISED THROUGH JANUARY, 1976

REVISIONS: JULY 1976, OCTOBER 1976, APRIL 1977, MARCH 1978, DEC. 1978
NOV. 1979, JAN. 1981, JAN. 1982, FEB. 1983, FEB. 1984, JAN. 1985, JAN. 1986
JUL 1987, JUL 1988

NEW JERSEY DEPARTMENT OF THE TREASURY
DIVISION OF TAXATION
LOCAL PROPERTY AND PUBLIC UTILITY BRANCH
APPROVED AS A TAX MAP PURSUANT TO THE
PROVISIONS OF CHAPTER 175, LAWS OF 1973, A.C.
FOR THE COMMISSIONER, DIVISION OF TAXATION

J. H. Deane

BY: MAR 7 1977 (SERIAL NO. 562)
DATE: P.L. & L.S. C.P.F.

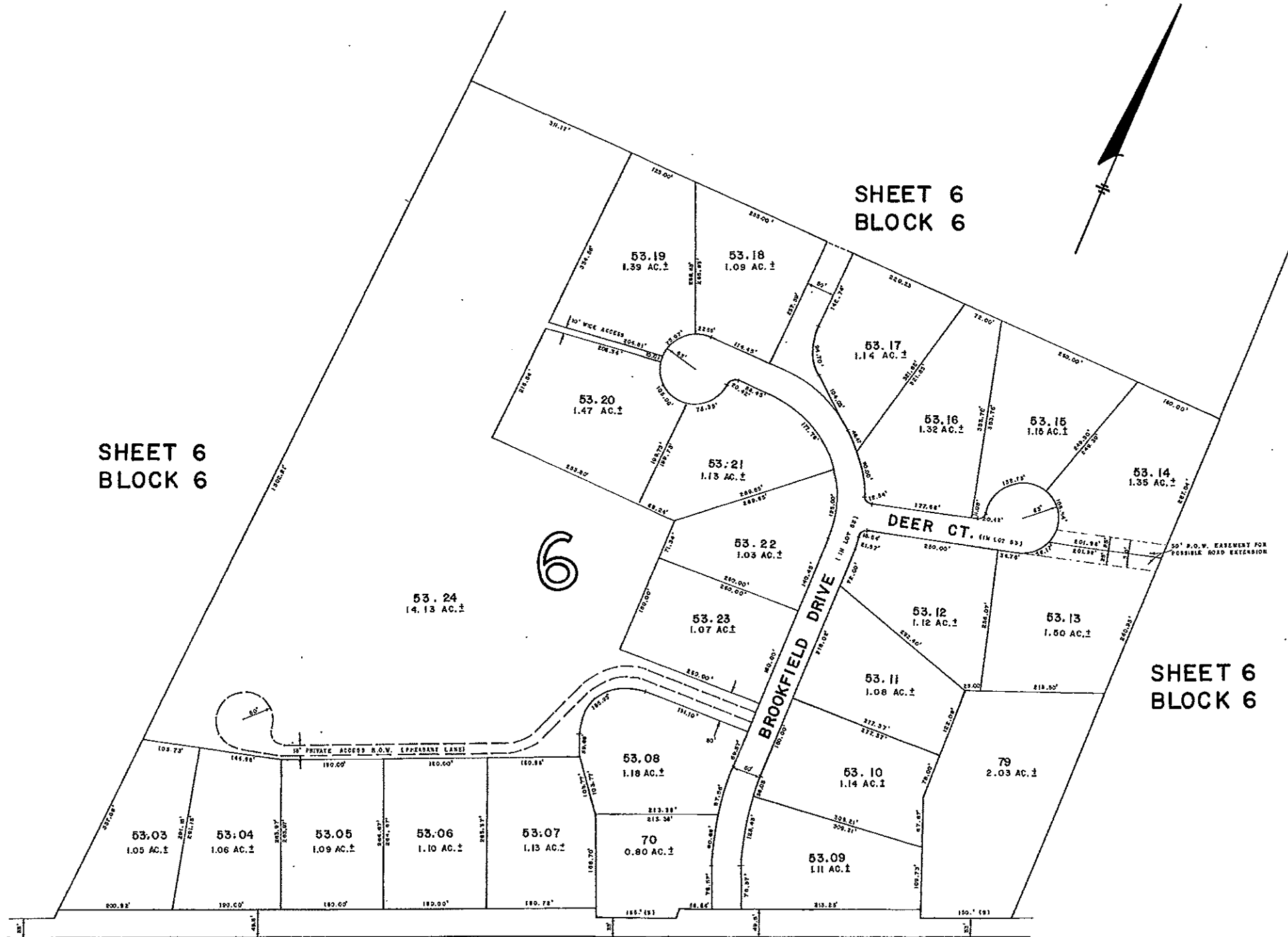


SHEET 6
BLOCK 6

SHEET 6
BLOCK 6

6

SHEET 6
BLOCK 6



SPRINGMILLS - LITTLE YORK ROAD
COUNTY ROUTE 64

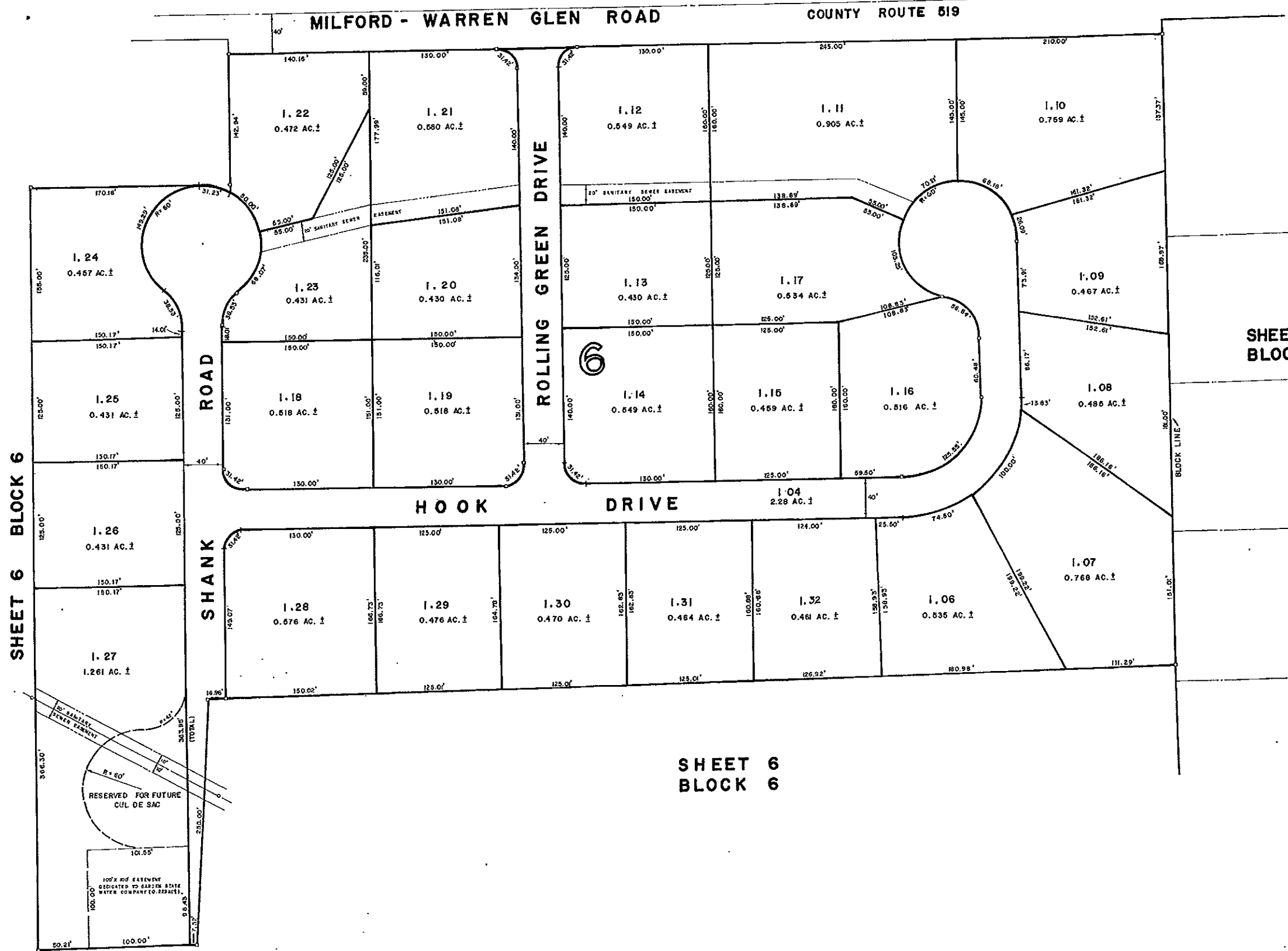
SHEET II
BLOCK II

NEW JERSEY DEPARTMENT OF THE TREASURY
DIVISION OF TAXATION
LOCAL PROPERTY AND PUBLIC UTILITY TAXES
APPROVED AS A TAX MAP PURSUANT TO THE
PROVISIONS OF CHAPTER 175, LAWS OF 1913, AND
FOR THE DIRECTOR, DIVISION OF TAXATION

J. H. Davis

BY: _____ P.E. & L.S.
DATE: MAR 7 1977 SERIAL NO. 562

TAX MAP
HOLLAND TOWNSHIP
 Hunterdon County, N.J.
 Scale: 1" = 100' November, 1976
 FRANK W. BOHREN, P.E., L.S.
 N.J. LICENSE NO. 3090
BOHREN and BOHREN
ENGINEERING ASSOCIATES, INC.
 CONSULTING CIVIL AND SANITARY ENGINEERS AND LAND SURVEYORS
 32 CHURCH STREET, FLEMINGTON, N.J.
 REVISIONS: MARCH 1978, DEC. 1978, NOV. 1979, JAN. 1981, JAN. 1982, FEB. 1983,
 FEB. 1984, JAN. 1985, JAN. 1986, JAN. 1987, JAN. 1988.



SHEET 8
BLOCK 8.06

SHEET 6
BLOCK 6

SHEET 6
BLOCK 6

TAX MAP
HOLLAND TOWNSHIP
 Hunterdon County, N.J.
 Scale: 1" = 50' March, 1977
 FRANK W. BOHREN, P.E., L.S.
 N. J. LICENCE NO. 3090
BOHREN and BOHREN
ENGINEERING ASSOCIATES, INC.
 CONSULTING CIVIL AND SANITARY ENGINEERS AND LAND SURVEYORS
 32 CHURCH STREET FLEMINGTON, N. J.

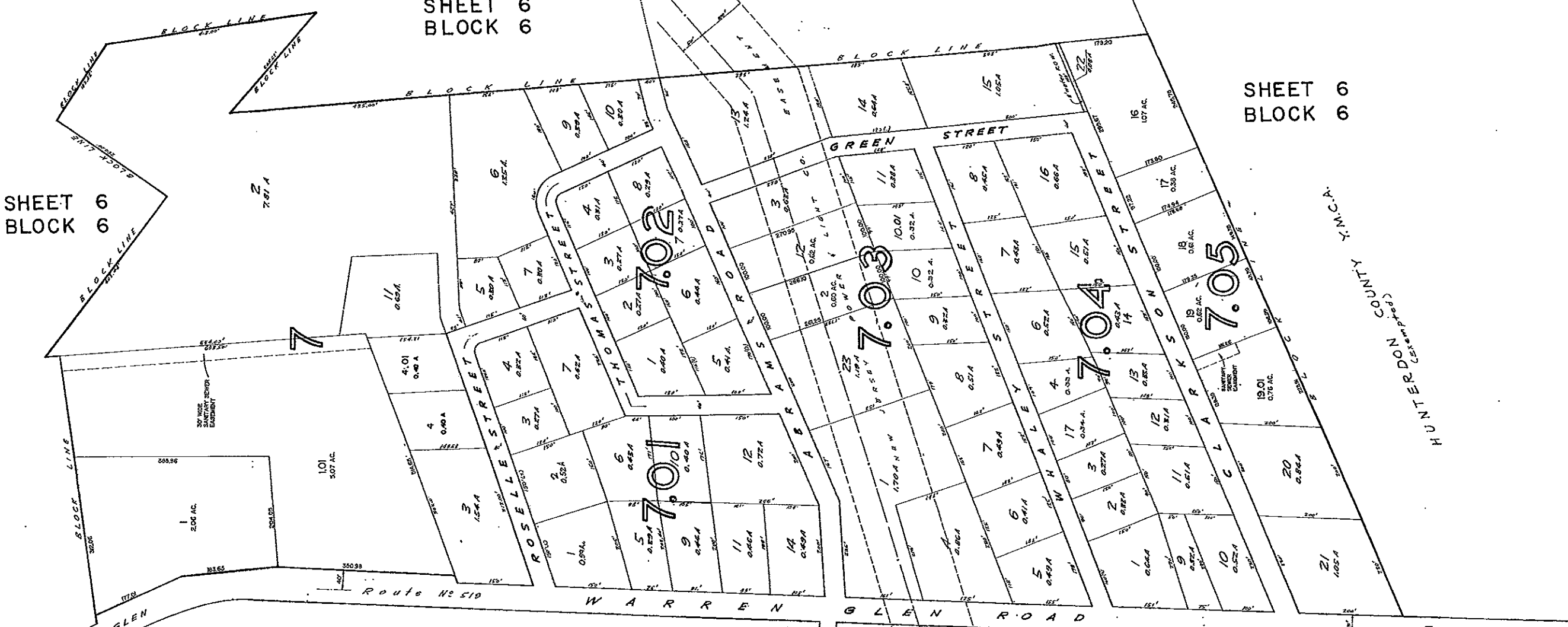
REVISIONS: MARCH 1978, DEC. 1978, NOV. 1979, JAN. 1981, JAN. 1982, FEB. 1983, FEB. 1984, JAN. 1985, JAN. 1986, JAN. 1987, JAN. 1988

RIEGEL PAPER CORPORATION

SHEET 6
BLOCK 6

SHEET 6
BLOCK 6

SHEET 6
BLOCK 6



SHEET 5
BLOCK 5

SHEET 10
BLOCK 10



TAX MAP
HOLLAND TOWNSHIP
 Hunterdon County, N.J.

Scale: 1" = 100' May, 1976

Frank W. Bohren, P.E., L.S.
 N.J. LICENSE NO. 3090

BOHREN and BOHREN
ENGINEERING ASSOCIATES INC.
 CONSULTING CIVIL AND SANITARY ENGINEERS AND LAND SURVEYORS
 32 CHURCH STREET FLEMINGTON, N.J.

BASED ON ORIGINAL MAPS PREPARED BY FRANK W. BOHREN
 DATED JUNE, 1959 — REVISED THROUGH JANUARY, 1976

REVISIONS: OCTOBER 1976 APRIL 1977, MARCH 1978, DEC. 1978, NOV. 1979
 JAN. 1981, JAN. 1982, FEB. 1983, FEB. 1984, JAN. 1985, JAN. 1986, JAN. 1987, JAN. 1988

NEW JERSEY DEPARTMENT OF THE TREASURY
 DIVISION OF TAXATION
 LOCAL PROPERTY AND PUBLIC UTILITY BRANCH

APPROVED AS A TAX MAP PURSUANT TO THE
 PROVISIONS OF CHAPTER 123, LAWS OF 1913, ETC.
 FOR THE OFFICIAL DIVISION OF TAXATION

J. N. Deane

DATE: MAR 7 1977 P.E. & L.S. 56



POHATCONG TOWNSHIP
WARREN COUNTY

SHEET 4
BLOCK 4

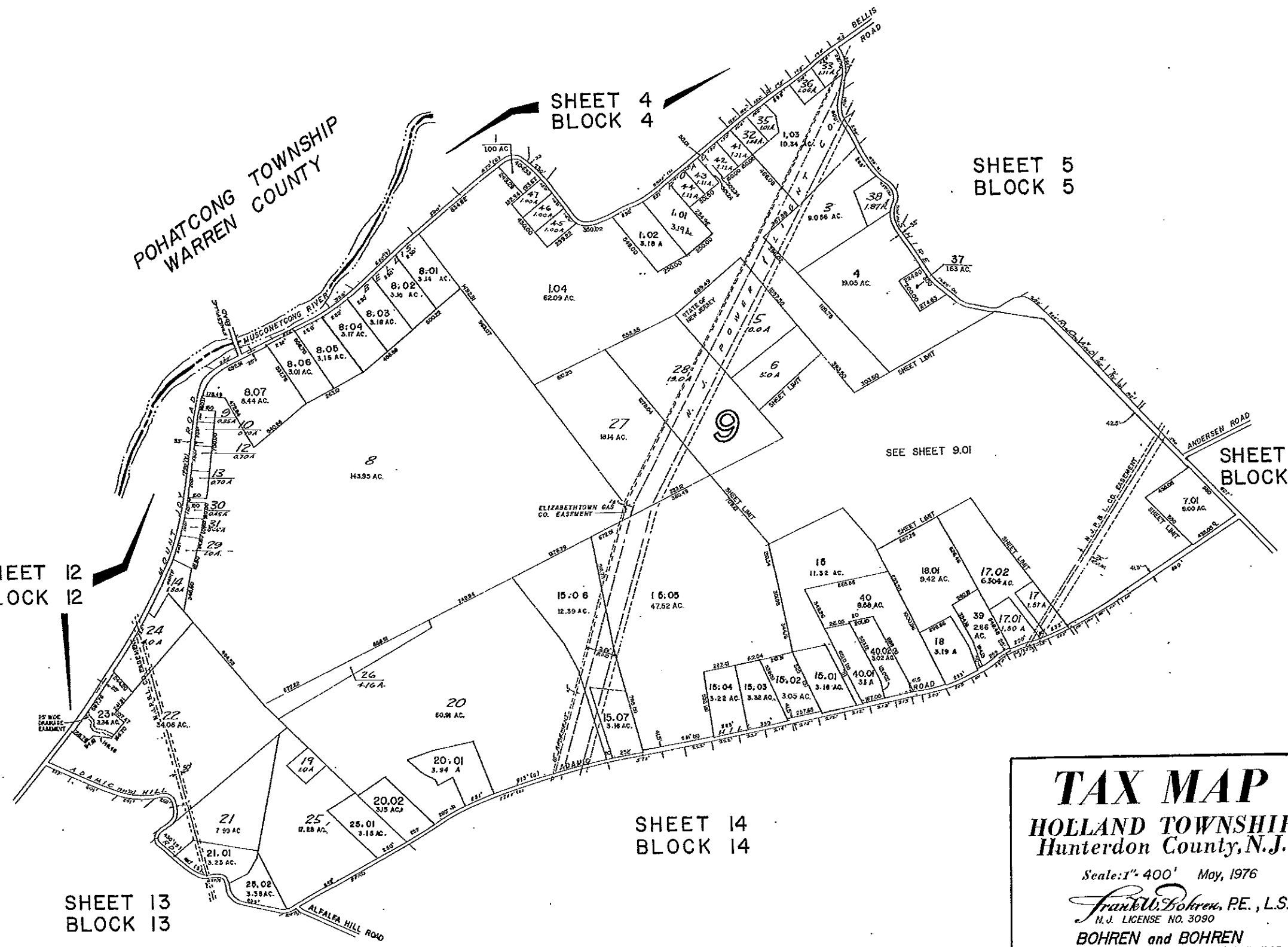
SHEET 5
BLOCK 5

SHEET 12
BLOCK 12

SHEET 10
BLOCK 10

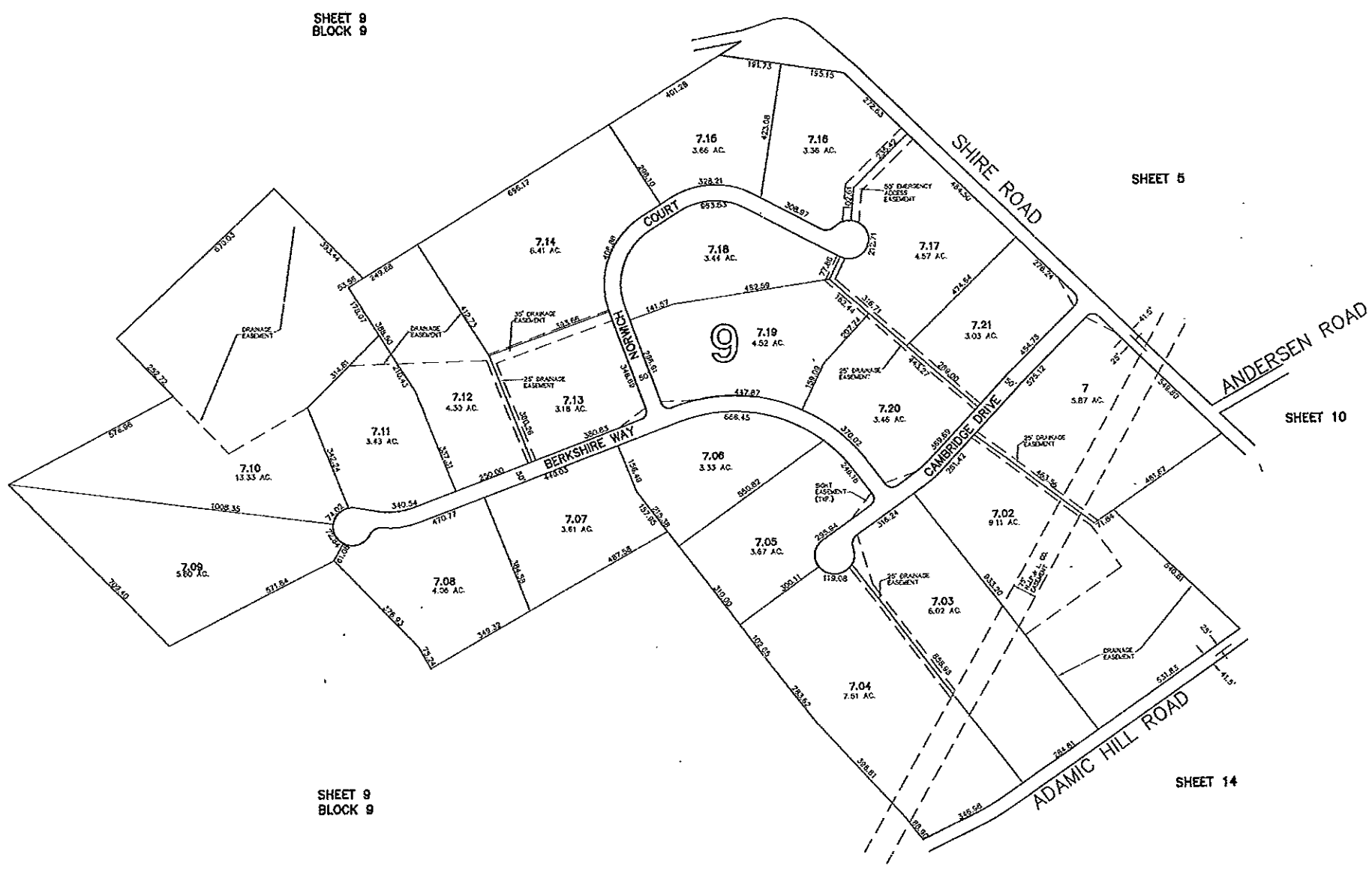
SHEET 14
BLOCK 14

SHEET 13
BLOCK 13

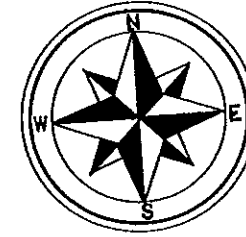


NEW JERSEY DEPARTMENT OF THE TREASURY
DIVISION OF TAXATION
LOCAL PROPERTY AND PUBLIC UTILITY ESCROW
APPROVED AS A TAX MAP PURSUANT TO THE
PROVISIONS OF CHAPTER 173, LAWS OF 1913, AS
AMENDED, FOR THE DIRECTOR, DIVISION OF TAXATION.
J. H. [Signature]
BY: [Signature] P.E. & L.S.
DATE: MAR 7 1977 SERIAL NO. 5672

TAX MAP
HOLLAND TOWNSHIP
 Hunterdon County, N.J.
 Scale: 1" = 400' May, 1976
Frank W. Bohren, P.E., L.S.
 N.J. LICENSE NO. 3090
BOHREN and BOHREN
ENGINEERING ASSOCIATES INC.
 CONSULTING CIVIL AND SANITARY ENGINEERS AND LAND SURVEYORS
 32 CHURCH STREET FLEMINGTON, N.J.
 BASED ON ORIGINAL MAPS PREPARED BY FRANK W. BOHREN
 DATED JUNE, 1959 — REVISED THROUGH JANUARY, 1976
 REVISIONS: JULY 1976, OCTOBER 1976 APRIL 1977, NOV. 1977, MARCH 1978
 DEC. 1978, NOV. 1978, JAN. 1981, JAN. 1982, FEB. 1983, FEB. 1984, JAN. 1985,
 MAR. 1985, OCT. 1987, DEC. 1988.



TAX MAP
 TOWNSHIP OF HOLLAND
 HUNTERDON COUNTY, NEW JERSEY
 SCALE: 1"= 200' JULY 2002
 H. CLAY McELDOWNEY, P.E., L.S.
 STUDER AND McELDOWNEY, P.A.
 120 W. MAIN ST., CLINTON, NEW JERSEY



SHEET 5
BLOCK 6

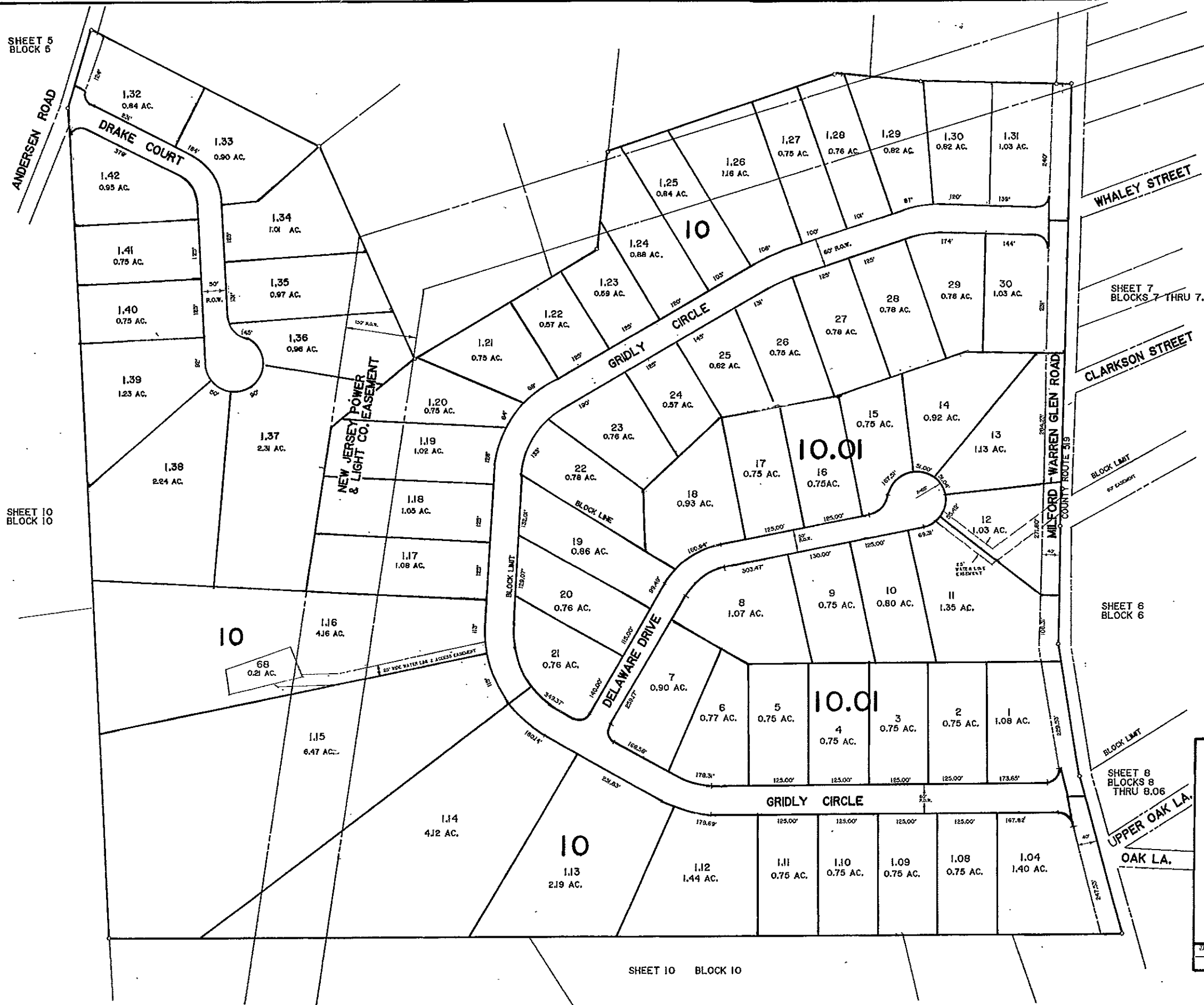
SHEET 10
BLOCK 10

SHEET 7
BLOCKS 7 THRU 7.05

SHEET 6
BLOCK 6

SHEET 8
BLOCKS 8
THRU 8.06

SHEET 10 BLOCK 10



TAX MAP
HOLLAND TOWNSHIP
 Hunterdon County, N.J.
 Scale: 1" = 100' January, 1986
FRANK W. BOHREN, PE, L.S.
 N.J. LICENSE NO. 3090
BOHREN and BOHREN
ENGINEERING ASSOCIATES, INC.
 CONSULTING CIVIL AND SANITARY ENGINEERS AND LAND SURVEYORS
 32 CHURCH STREET FLEMINGTON, N.J.
 JAN. 1987, JAN. 1988