

SHEET 6
BLOCK 6

SHEET 6.01
BLOCK 6

SHEET 16
BLOCK 16

SHEET 16.01
BLOCKS 11.02, 11.03 AND
16.01 THRU 16.10

SHEET 16
BLOCK 16

TAX MAP

HOLLAND TOWNSHIP

Hunterdon County, N.J.

Scale: 1" = 400' May, 1976

Frank W. Bohren, P.E., L.S.
N.J. LICENSE NO. 3090

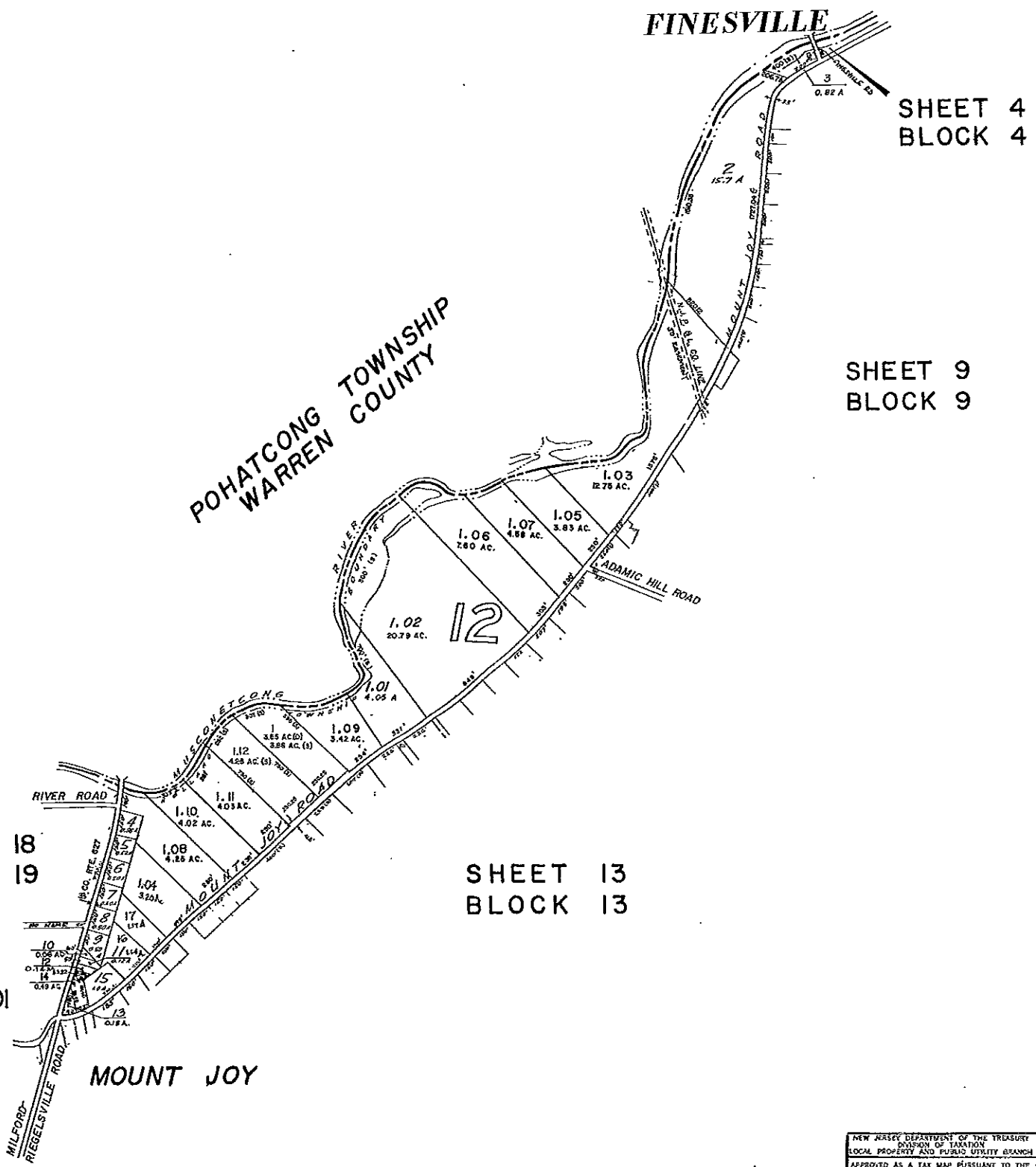
BOHREN and BOHREN
ENGINEERING ASSOCIATES INC.
CONSULTING CIVIL AND SANITARY ENGINEERS AND LAND SURVEYORS
32 CHURCH STREET FLEMINGTON, N.J.

BASED ON ORIGINAL MAPS PREPARED BY FRANK W. BOHREN
DATED JUNE, 1959 — REVISED THROUGH JANUARY, 1976

NEW JERSEY DEPARTMENT OF THE TREASURY
LOCAL PROPERTY AND PUBLIC UTILITY BRANCH
APPROVED AS A TAX MAP PURSUANT TO THE
PROVISIONS OF CHAPTER 274, LAWS OF 1952, AND
FOR THE DIRECTOR, DIVISION OF TAXATION

MAR 7 1977 SERIAL NO. 502

REVISIONS: OCTOBER 1976, APRIL 1977, NOV. 1977, MARCH 1978, DEC. 1978
JAN. 1979, JAN. 1980, JAN. 1982, FEB. 1983, FEB. 1984, JAN. 1985, JAN. 1986, JANUARY 1987



TAX MAP
HOLLAND TOWNSHIP
 Hunterdon County, N.J.

Scale: 1" = 400' May, 1976
Frank W. Bohren, P.E., L.S.
 N.J. LICENSE NO. 3090
BOHREN and BOHREN
ENGINEERING ASSOCIATES INC.
 CONSULTING CIVIL AND SANITARY ENGINEERS AND LAND SURVEYORS
 32 CHURCH STREET FLEMINGTON, N.J.
 BASED ON ORIGINAL MAPS PREPARED BY FRANK W. BOHREN
 DATED JUNE, 1959 — REVISED THROUGH JANUARY, 1976

NEW JERSEY DEPARTMENT OF THE TREASURY
 DIVISION OF TAXATION
 LOCAL PROPERTY AND PUBLIC UTILITY BRANCH
 APPROVED AS A TAX MAP PURSUANT TO THE
 PROVISIONS OF CHAPTER 173, LAWS OF 1919, AS
 AMENDED, FOR THE DIRECTOR, DIVISION OF TAXATION
J. H. Davis
 BY: MAR 7 1977 SERIAL NO. 56 257

REVISIONS: JULY 1976, OCTOBER 1976 APRIL 1977, MARCH 1978, DEC. 1978
 NOV 1979, JAN. 1981, JAN. 1982, FEB. 1983, FEB. 1984, JAN. 1985, JAN. 1986,
 JAN. 1987, JAN. 1988

SHEET 9
BLOCK 9

SHEET 12
BLOCK 12

SHEET 14
BLOCK 14

SHEET 18
BLOCK 19.0
MOUNT JOY

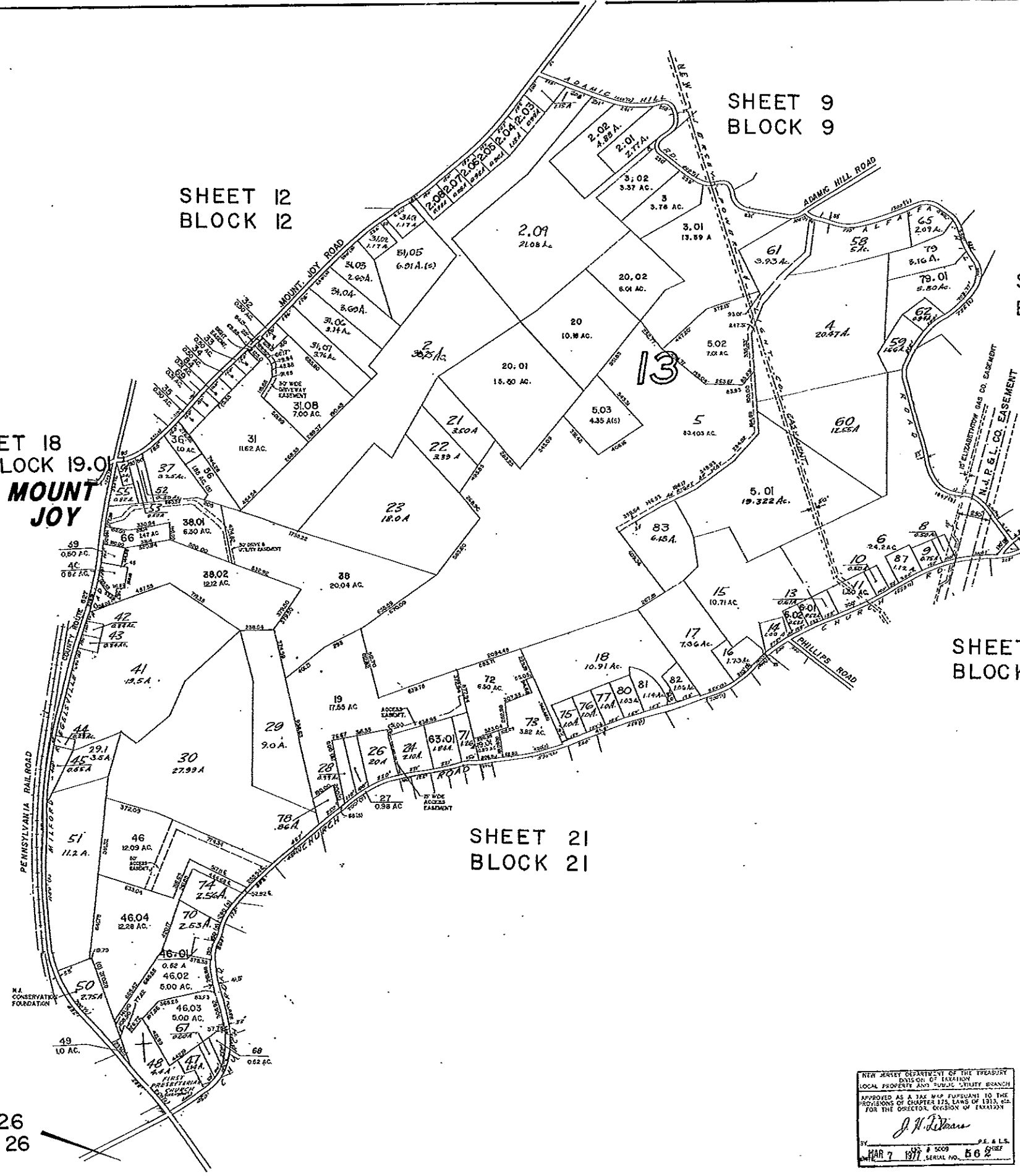
SHEET 18
BLOCK 27

SHEET 14
BLOCK 14.01

SHEET 20
BLOCK 20

SHEET 21
BLOCK 21

SHEET 26
BLOCK 26



TAX MAP
HOLLAND TOWNSHIP
 Hunterdon County, N.J.

Scale: 1" = 400' May, 1976

Frank W. Bohren, RE., L.S.
 N.J. LICENSE NO. 3090

BOHREN and BOHREN
ENGINEERING ASSOCIATES INC.
 CONSULTING CIVIL AND SANITARY ENGINEERS AND LAND SURVEYORS
 32 DEERCH STREET FLEMINGTON, N.J.

BASED ON ORIGINAL MAPS PREPARED BY FRANK W. BOHREN
 DATED JUNE, 1959 — REVISED THROUGH JANUARY, 1976

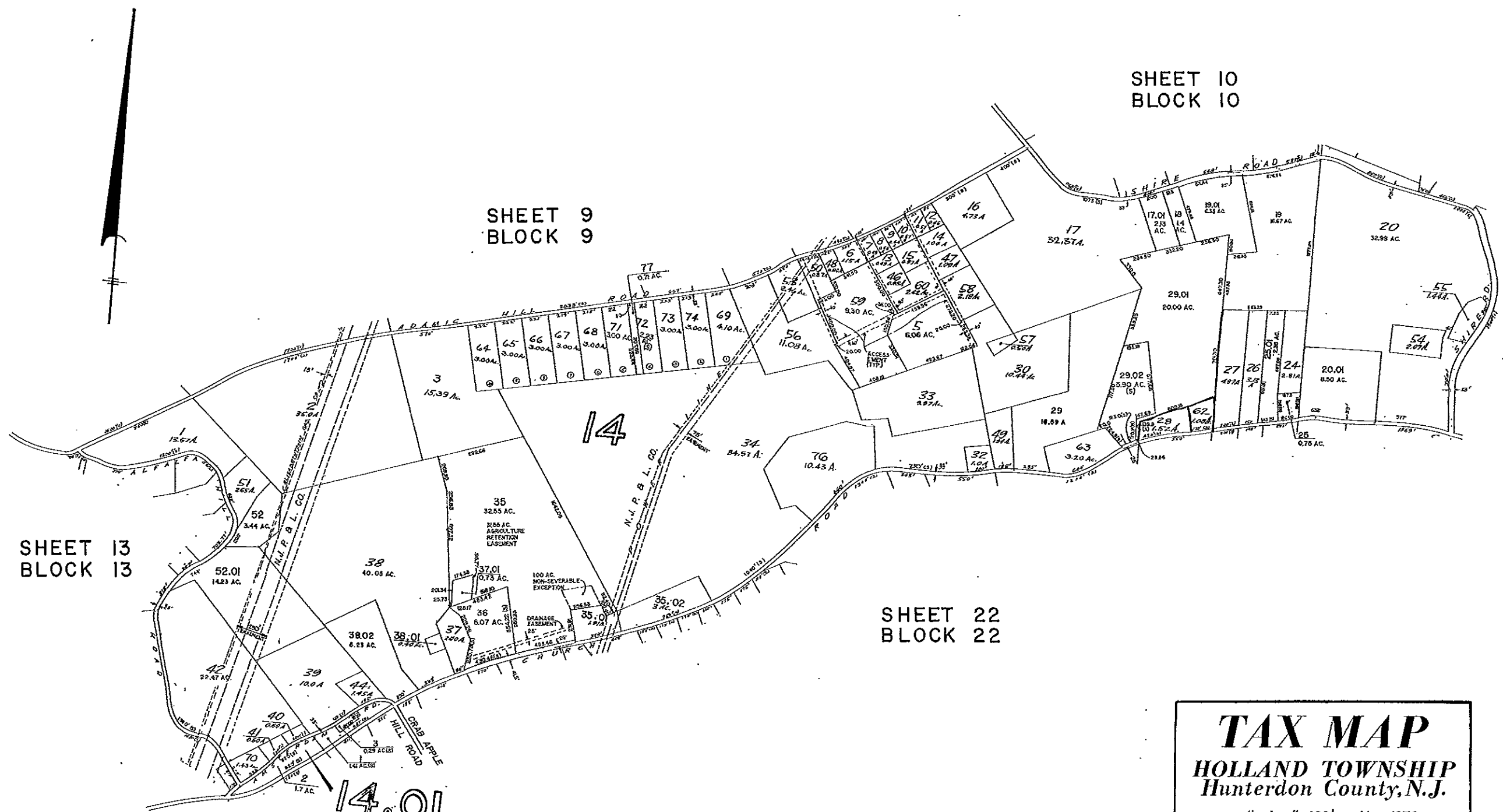
REVISIONS: JULY 1976, OCTOBER 1976, APRIL 1977, MARCH 1978, DEC. 1978
 NOV. 1979, JAN. 1981, JAN. 1982, FEB. 1983, FEB. 1984, JAN. 1985, JAN. 1988,
 JAN. 1987, JAN. 1989

NEW JERSEY DEPARTMENT OF THE TREASURY
 DIVISION OF TAXATION
 LOCAL PROPERTY AND PUBLIC UTILITY BRANCH

APPROVED AS A TAX MAP PURSUANT TO THE
 PROVISIONS OF CHAPTER 175, LAWS OF 1913, ETC.
 FOR THE DIRECTOR, DIVISION OF TAXATION

J. H. Wilson

MAR 7 1977 SERIAL NO. 562



TAX MAP
HOLLAND TOWNSHIP
Hunterdon County, N.J.

Scale: 1" = 400' May, 1976

Frank W. Bohren, RE., L.S.
 N.J. LICENSE NO. 3090

BOHREN and BOHREN
ENGINEERING ASSOCIATES INC.
 CONSULTING CIVIL AND SANITARY ENGINEERS AND LAND SURVEYORS
 32 CHURCH STREET FLEMINGTON, N.J.

BASED ON ORIGINAL MAPS PREPARED BY FRANK W. BOHREN
 DATED JUNE, 1959 — REVISED THROUGH JANUARY, 1976

REVISIONS: OCTOBER 1976, NOV. 1977, MARCH 1978, DEC. 1978, NOV. 1979
 JAN. 1981, JAN. 1982, FEB. 1983, FEB. 1984, JAN. 1985, JAN. 1986, JAN. 1987, JAN. 1988

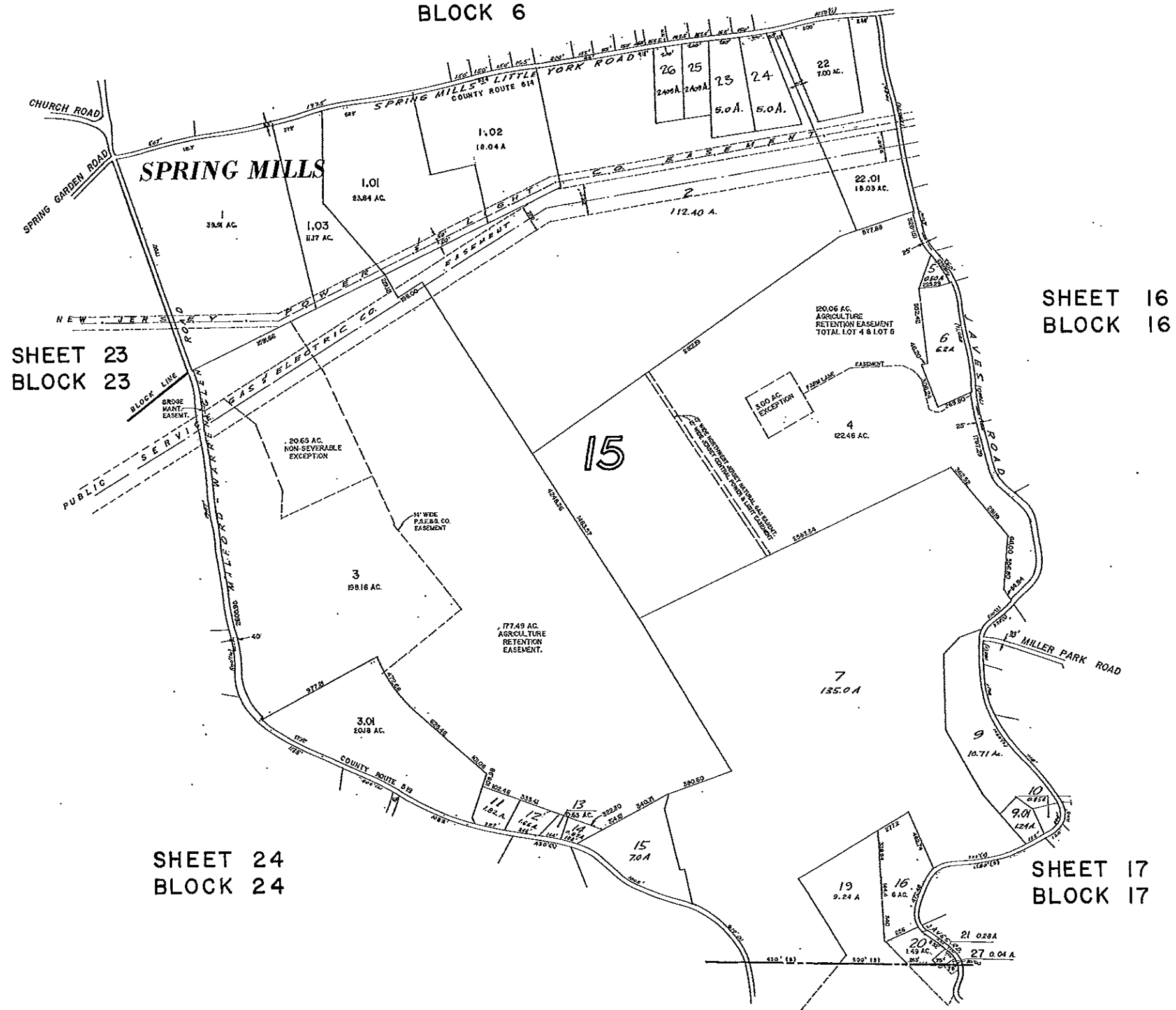
NEW JERSEY DEPARTMENT OF THE TREASURY
 DIVISION OF TAXATION
 LOCAL PROPERTY AND PUBLIC UTILITY TAXES

APPROVED AS A TAX MAP PURSUANT TO THE
 PROVISIONS OF CHAPTER 175, LAWS OF 1913, AND
 FOR THE DIRECTOR, DIVISION OF TAXATION

J. H. Deane

BY: _____ INC. & SONS P.E. & L.S.
 DATE: MAR 7 1977 SERIAL NO. 568

SHEET 6
BLOCK 6



SHEET 23
BLOCK 23

SHEET 16
BLOCK 16

SHEET 24
BLOCK 24

SHEET 17
BLOCK 17

MILFORD
BOROUGH

TAX MAP
HOLLAND TOWNSHIP
 Hunterdon County, N.J.

Scale: 1" = 400' May, 1976

Frank W. Bohren, RE., L.S.
 N.J. LICENSE NO. 3090

BOHREN and BOHREN
ENGINEERING ASSOCIATES INC.
 CONSULTING CIVIL AND SANITARY ENGINEERS AND LAND SURVEYORS
 32 CHURCH STREET FLEMINGTON, N.J.

BASED ON ORIGINAL MAPS PREPARED BY FRANK W. BOHREN
 DATED JUNE, 1959 — REVISED THROUGH JANUARY, 1976

REVISIONS: OCTOBER 1976, MARCH 1978, DEC. 1978, NOV. 1979, JAN. 1980
 JAN. 1982, FEB. 1983, FEB. 1984, JAN. 1985, JAN. 1986, JAN. 1987, JAN. 1988

NEW JERSEY DEPARTMENT OF THE TREASURY
 DIVISION OF TAXATION
 LOCAL PROPERTY AND PUBLIC UTILITY BRANCH
 APPROVED AS A TAX MAP PURSUANT TO THE
 PROVISIONS OF CHAPTER 125, LAWS OF 1974, AND
 FOR THE DIRECTOR, DIVISION OF TAXATION.

J. H. Bohren

BY: *J. H. Bohren* P.E. & L.S.
 DATE: MAR 7 1977 SERIAL NO. 692